

**RPB081Ra01 10µg**

**Recombinant Heat Shock 70kDa Protein 1A (HSPA1A)**

**Organism Species: *Rattus norvegicus* (Rat)**

***Instruction manual***

FOR RESEARCH USE ONLY

NOT FOR USE IN CLINICAL DIAGNOSTIC PROCEDURES

---

12th Edition (Revised in Aug, 2016)

**[ PROPERTIES ]**

**Source:** Prokaryotic expression

**Host:** *E.coli*

**Residues:** Met1~Asp641

**Tags:** N-terminal His Tag

**Subcellular Location:** Nucleus, Cytoplasm

**Purity:** > 90%

**Traits:** Freeze-dried powder

**Buffer formulation:** PBS, pH7.4, containing 0.01% SKL, 1mM DTT, 5% Trehalose and Proclin300.

**Original Concentration:** 200µg/mL

**Applications:** Positive Control; Immunogen; SDS-PAGE; WB.

(May be suitable for use in other assays to be determined by the end user.)

**Predicted isoelectric point:** 5.6

**Predicted Molecular Mass:** 71.4kDa

**Accurate Molecular Mass:** 71kDa as determined by SDS-PAGE reducing conditions.

**[ USAGE ]**

Reconstitute in 10mM PBS (pH7.4) to a concentration of 0.1-1.0 mg/mL. Do not vortex.

**[ STORAGE AND STABILITY ]**

**Storage:** Avoid repeated freeze/thaw cycles.

Store at 2-8°C for one month.

Aliquot and store at -80°C for 12 months.

**Stability Test:** The thermal stability is described by the loss rate. The loss rate was determined by accelerated thermal degradation test, that is, incubate the protein at 37°C for 48h, and no obvious degradation and precipitation were observed. The loss rate is less than 5% within the expiration date under appropriate storage condition.

**[ SEQUENCE ]**

```

MAKKTAIKID LGTTYSCVGV FQHGKVEIIA NDQGNRTTPS YVAFTDTERL
IGDAAKNQVA LNPQNTVFDA KRLIGRKFGD PVVQSDMKHW PFQVVNDGDK
PKVQVNYKGE NRSFYPEEIS SMVLTKMKEI AEAYLGHPVT NAVITVPAYF
NDSQRQATKD AGVIAGLNVL RIINEPTAAA IAYGLDRTGK GERNVLIFDL
GGGTFDVSIL TIDDGIFEVK ATAGDTHLGG EDFDNRLVSH FVEEFKRKHK
KDISQNKRAV RRLRTACERA KRTLSSSTQA SLEIDSLFEG IDFYTSITRA
RFEELCSDLF RGTLEPVEKA LRDAKLDKAQ IHDLVLVGGG TRIPKVQKLL
QDFFNGRDLN KSINPDEAVA YGAAVQAAIL MGDKSENVQD LLLLDVAPLS
LGLETAGGVM TALIKRNSTI PTKQTQFTT YSDNQPGVLI QVYEGERAMT
RDNMLLGRFE LSGIPPAPRG VPQIEVTFDI DANGILNVTA TDKSTGKANK
ITITNDKGR L SKEEIERMVQ EAERYKAEDE VQRERVAASN ALESYAFNMK
SAVEDEGLKG KISEADKKKV LDKCQEVISW LDSNTLAEKE EFVHKREELE
RVCNPIISGL YQGAGAPGAG GFGAQAPKGG SGSGPTIEEV D
  
```

**[ IDENTIFICATION ]**

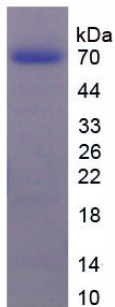


Figure. SDS-PAGE

**[ IMPORTANT NOTE ]**

The kit is designed for research use only, we will not be responsible for any issue if the kit was used in clinical diagnostic or any other procedures.