

RPB995Hu03 50µg

Recombinant Hemojuvelin (HJV)

Organism Species: *Homo sapiens (Human)*

Instruction manual

FOR RESEARCH USE ONLY

NOT FOR USE IN CLINICAL DIAGNOSTIC PROCEDURES

12th Edition (Revised in Aug, 2016)

[PROPERTIES]

Source: Prokaryotic expression

Host: *E.coli*

Residues: Leu29~Ala401

Tags: N-terminal His Tag

Subcellular Location: Membrane

Purity: > 97%

Traits: Freeze-dried powder

Buffer formulation: PBS, pH7.4, containing 0.01% SKL, 5% Trehalose.

Original Concentration: 250µg/mL

Applications: Positive Control; Immunogen; SDS-PAGE; WB.

(May be suitable for use in other assays to be determined by the end user.)

Predicted isoelectric point: 8.0

Predicted Molecular Mass: 43.3kDa

Accurate Molecular Mass: 43kDa as determined by SDS-PAGE reducing conditions.

[USAGE]

Reconstitute in 10mM PBS (pH7.4) to a concentration of 0.1-1.0 mg/mL. Do not vortex.

[STORAGE AND STABILITY]

Storage: Avoid repeated freeze/thaw cycles.

Store at 2-8°C for one month.

Aliquot and store at -80°C for 12 months.

Stability Test: The thermal stability is described by the loss rate. The loss rate was determined by accelerated thermal degradation test, that is, incubate the protein at 37°C for 48h, and no obvious degradation and precipitation were observed. The loss rate is less than 5% within the expiration date under appropriate storage condition.

[SEQUENCE]

```

LC  GHASHSQCKIL  RCNAEYVSST  LSLRGGGSSG  ALRGGGGGGR  GGGVGSGLC  RALRSYALCT  RRTARTCRGD
LAFHSAVHGI  EDLMIQHNC  RQGPTAPPP  RGPALPGAGS  GLPAPDPCDY  EGRFSRLHGR  PPGFLHCASF  GDPHVSFHH
HFHTCRVQGA  WPLLDNDLF  VQATSSPMAL  GANATATRKL  TIIFKNMQEC  IDQKVYQAEV  DNLPVAFEDG  SINGGDRPGG
SSLSIQTANP  GNHVEIQAY  IGTIIIIRQT  AGQLSFSIKV  AEDVAMAFSA  EQDLQLCVGG  CPPSQRLSRS  ERNRRGAIIT
DTARRLCKEG  LPVEDAYFHS  CVFDVLISGD  PNFTVAAQAA
LEDARAFLPD  LEKLHLFSPD  A
  
```

[IDENTIFICATION]

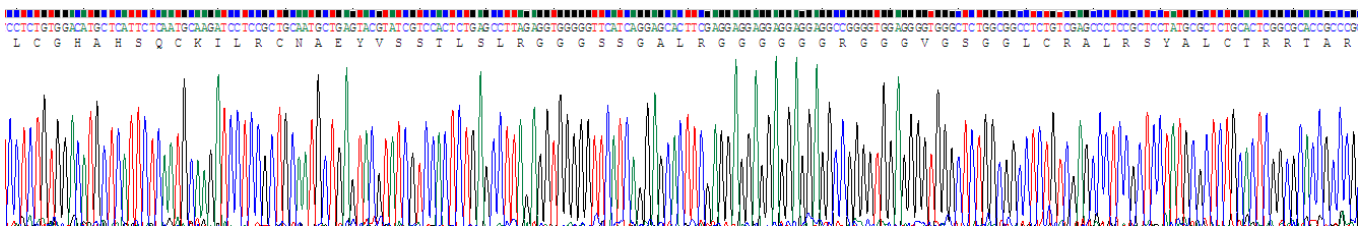
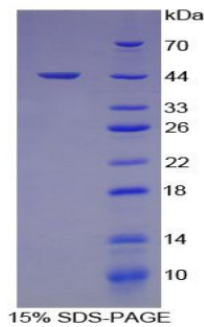


Figure. Gene Sequencing (Extract)



[IMPORTANT NOTE]

The kit is designed for research use only, we will not be responsible for any issue if the kit was used in clinical diagnostic or any other procedures.