

RPC206Hu01 10µg
Recombinant Histone Deacetylase 1 (HDAC1)
Organism Species: *Homo sapiens (Human)*
Instruction manual

FOR RESEARCH USE ONLY
NOT FOR USE IN CLINICAL DIAGNOSTIC PROCEDURES

12th Edition (Revised in Aug, 2016)

[PROPERTIES]

Source: Prokaryotic expression

Host: *E.coli*

Residues: Met1~Ala482

Tags: N-terminal His Tag

Subcellular Location: Nucleus

Purity: > 90%

Traits: Freeze-dried powder

Buffer formulation: PBS, pH7.4, containing 0.01% SKL, 5% Trehalose.

Original Concentration: 70µg/mL

Applications: Positive Control; Immunogen; SDS-PAGE; WB.

(May be suitable for use in other assays to be determined by the end user.)

Predicted isoelectric point: 5.3

Predicted Molecular Mass: 58.8kDa

Accurate Molecular Mass: 28&70kDa as determined by SDS-PAGE reducing conditions.

Phenomenon explanation:

The possible reasons that the actual band size differs from the predicted are as follows:

1. Splice variants: Alternative splicing may create different sized proteins from the same gene.
2. Relative charge: The composition of amino acids may affects the charge of the protein.
3. Post-translational modification: Phosphorylation, glycosylation, methylation etc.
4. Post-translation cleavage: Many proteins are synthesized as pro-proteins, and then cleaved to give the active form.
5. Polymerization of the target protein: Dimerization, multimerization etc.

[USAGE]

Reconstitute in ddH₂O to a concentration of 0.1-0.5 mg/mL. Do not vortex.

[STORAGE AND STABILITY]

Storage: Avoid repeated freeze/thaw cycles.

Store at 2-8°C for one month.

Aliquot and store at -80°C for 12 months.

Stability Test: The thermal stability is described by the loss rate. The loss rate was determined by accelerated thermal degradation test, that is, incubate the protein at 37°C for 48h, and no obvious degradation and precipitation were observed. The loss rate is less than 5% within the expiration date under appropriate storage condition.

[**SEQUENCE**]

```

MAQTQGTRRK VCYYYDGDVG NYYYGQGHM KPHRIRMTHN LLLNYGLYRK
MEIYRPHKAN AEEMTKYHSD DYIKFLRSIR PDMSEYSKQ MQRFNVEDC
PVFDGLFEFC QLSTGGSVAS AVKLNKQQT D IAVNWAGGLH HAKKSEASGF
CYVNDIVLAI LELLKYHQRV LYIDIDIHGG DGVEEAFYTT DRVMTVSFHK
YGEYFPGTGD LRDIGAGK GK YYAVNYPLRD GIDDES YEAI FKPVMSKVME
MFQPSAVVLQ CGSDSLSGDR LGC FNLTIKG HAKC VEFVKS FNL PMLMLGG
GGYTIRNVAR CWTYETAVAL DTEIPNELPY NDYFEYFGPD FKLHISPSNM
TNQNTNEYLE KIKQRLFENL RMLPHAPGVQ MQAIPEDAIP EESGDEDEDD
PDKRISICSS DKRIACEEEF SDSEEEGEGG RKNSSNFKKA KRVKTEDEKE
KDPEEKKEVT EEEKTKEEKP EAKGVKEEVK LA
  
```

[**IDENTIFICATION**]

```

CATGCGCAGACGCGAGGGCAACCGGAGGAAAGTCTGTTACTAAGACGGGSAAGTTGGAAATTAATATATGSAACAGGCGCAACCAATGAAAGCCTCAGCGAATCCCAATGACTCATAAATTTCTCTCACTATGCTCTTAACGAAAAATCGAAATCTATCCCTCCAAAGCCAAATCTGAGGAGATGACCAAGTAACACAGGA
H A Q T Q G T R R K V C Y Y Y D G D V G N Y Y Y G Q G H P M K P H R I R H T H N L L L N Y G L Y R K H E I Y R P H K A N A E E H T K Y H S D
  
```

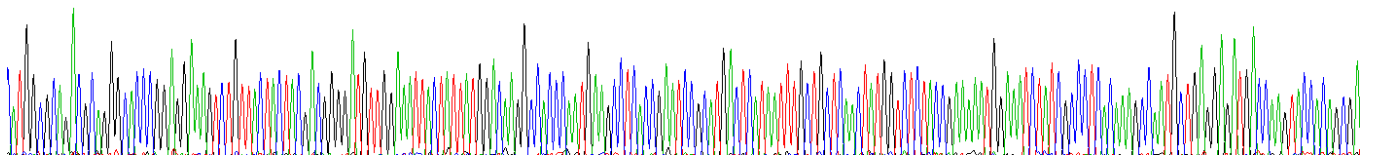


Figure. Gene Sequencing (Extract)



Figure. SDS-PAGE

[IMPORTANT NOTE]

The kit is designed for research use only, we will not be responsible for any issue if the kit was used in clinical diagnostic or any other procedures.