

**RPA543MU01 50µg**  
**Recombinant Immunoglobulin M (IgM)**  
**Organism Species: *Mus musculus* (Mouse)**  
***Instruction manual***

FOR RESEARCH USE ONLY  
NOT FOR USE IN CLINICAL DIAGNOSTIC PROCEDURES

---

13th Edition (Revised in Aug, 2023)

## [ **PROPERTIES** ]

**Source:** Prokaryotic expression

**Host:** *E.coli*

**Residues:** Ser1~Tyr454

**Tags:** Two N-terminal Tags, His-tag and SUMO-tag

**Subcellular Location:** Membrane, Secreted

**Purity:** > 95%

**Traits:** Freeze-dried powder

**Buffer formulation:** 20mM Tris, 150mM NaCl, pH8.0, containing 0.01% Sarcosyl, 5%Trehalose.

**Original Concentration:** 1500µg/mL

**Applications:** Positive Control; Immunogen; SDS-PAGE; WB.

(May be suitable for use in other assays to be determined by the end user.)

**Predicted isoelectric point:** 7.0

**Predicted Molecular Mass:** 63.7kDa

**Accurate Molecular Mass:** 65kDa as determined by SDS-PAGE reducing conditions.

## [ **USAGE** ]

Reconstitute in 20mM Tris, 150mM NaCl (pH8.0) to a concentration of 0.1-1.0 mg/mL. Do not vortex.

## [ **STORAGE AND STABILITY** ]

**Storage:** Avoid repeated freeze/thaw cycles.

Store at 2-8°C for one month.

Aliquot and store at -80°C for 12 months.

**Stability Test:** The thermal stability is described by the loss rate. The loss rate was determined by accelerated thermal degradation test, that is, incubate the protein at 37°C for 48h, and no obvious degradation and precipitation were observed. The loss rate is less than 5% within the expiration date under appropriate storage condition.

**[ SEQUENCE ]**

SQSFPNVFPL VSCESPLSDK NLVAMGCLAR DFLPSTISFT WNYQNNTEVI  
 QGIRTFPTLR TGGKYLATSQ VLLSPKSILE GSDEYLVCKI HYGGKNRDLH  
 VPIPAVAEMN PNVNVFVPPR DGFSGPAPRK SKLICEATNF TPKPITVSWL  
 KDGKLVESGF TTDPTIENK GSTPQTYKVI STLTISEIDW LNLNVYTCRV  
 DHRGLTFLKN VSSTCAASPS TDILTFTIPP SFADIFLSKS ANLTCLVSNL  
 ATYETLNISW ASQSGEPLET KIKIMESHPN GTFSAKGVAS VCVEDWNNRK  
 EFVCTVTHRD LPSPQKKFIS KPNEVHKHPP AVYLLPPARE QLNLRRESATV  
 TCLVKGFSPA DISVQWLQRG QLLPQEKYVT SAPMPEPGAP GFYFTHSILT  
 VTEEEWNSGE TYTCVVGHEA LPHLVTERTV DKSTGKPTLY NVSLIMSDTG  
 GTCY

**[ IDENTIFICATION ]**

GAATTCAGTCACTCTTCCGAAATGCTTCCOCCCTGCTCTCTCGGAGGAGCCOCTGTCTGATAAGAAATCTGGTGGCCATGGGCTGCTGGCCCGGGACTTCTCTGCCAGCCCACTTTCTCTTCACTGGAACTACCAGAACAACTACTGAAATGCATCCAGGGTATCAGAACCTTCCAA#

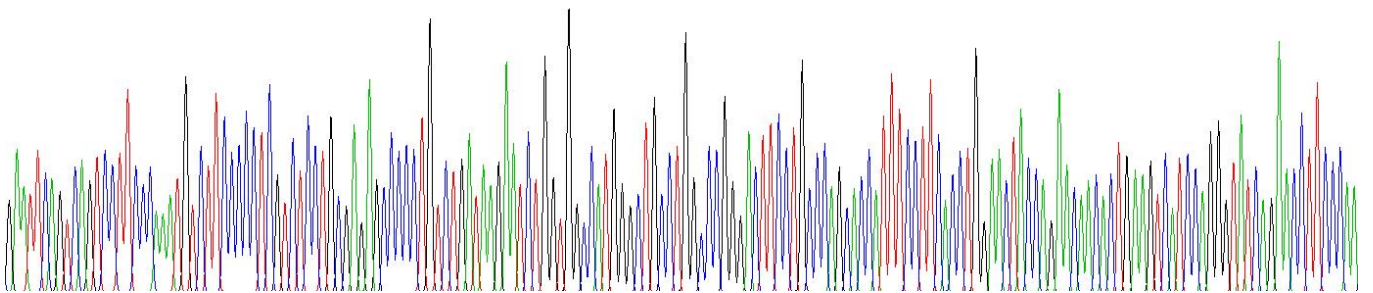


Figure . Gene Sequencing (extract)

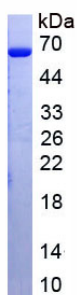


Figure. SDS-PAGE

**[ IMPORTANT NOTE ]**

The kit is designed for research use only, we will not be responsible for any issue if the kit was used in clinical diagnostic or any other procedures.