

RPA543Mu01 10µg

Recombinant Immunoglobulin M (IgM)

Organism Species: *Mus musculus* (Mouse)

Instruction manual

FOR RESEARCH USE ONLY

NOT FOR USE IN CLINICAL DIAGNOSTIC PROCEDURES

13th Edition (Revised in Aug, 2023)

[PROPERTIES]

Source: Prokaryotic expression

Host: *E.coli*

Residues: Ser1~Tyr454

Tags: Two N-terminal Tags, His-tag and SUMO-tag

Subcellular Location: Membrane, Secreted

Purity: > 95%

Traits: Freeze-dried powder

Buffer formulation: 20mM Tris, 150mM NaCl, pH8.0, containing 0.01% skl, 5%Trehalose.

Original Concentration: 1500µg/mL

Applications: Positive Control; Immunogen; SDS-PAGE; WB.

(May be suitable for use in other assays to be determined by the end user.)

Predicted isoelectric point: 7.0

Predicted Molecular Mass: 63.7kDa

Accurate Molecular Mass: 65kDa as determined by SDS-PAGE reducing conditions.

[USAGE]

Reconstitute in 20mM Tris, 150mM NaCl (pH8.0) to a concentration of 0.1-1.0 mg/mL. Do not vortex.

[STORAGE AND STABILITY]

Storage: Avoid repeated freeze/thaw cycles.

Store at 2-8°C for one month.

Aliquot and store at -80°C for 12 months.

Stability Test: The thermal stability is described by the loss rate. The loss rate was determined by accelerated thermal degradation test, that is, incubate the protein at 37°C for 48h, and no obvious degradation and precipitation were observed. The loss rate is less than 5% within the expiration date under appropriate storage condition.

[SEQUENCE]

SQSFNPVFL	VSCESPLSDK	NLVAMGLAR	DFLPSTISFT	WNYQNNTTEVI
QGIRTFPTLR	TGGKYLSQ	VLLSPKSILE	GSDEYLVCKI	HYGGKNRDLH
VPIPAVAEMN	PNVNVFVPPR	DGFGSPAPRK	SKLICEATNF	TPKPITVSWL
KDGKLVESGF	TTDPVTIENK	GSTPQTYKVI	STLTISEIDW	LNLNVYTCRV
DHRGLTFLKN	VSSTCAASPS	TDILTFTIPP	SFADIFLSKS	ANLTCLVSNL
ATYETLNISW	ASQSGELET	KIKIMESHPN	GTFSAGVAS	VCVEDWNNRK
EFVCTVTHRD	LPSPQKKFIS	KPNEVHKHPP	AVYLLPPARE	QLNLRESATV
TCLVKGFSPA	DISVQLQRG	QLLPQEKYVT	SAPMPEPGAP	GFYFTHSILT
VTEEEWNSGE	TYTCVVGHEA	LPHLVTERTV	DKSTGKPTLY	NVSLIMSDTG
GTCY				

[IDENTIFICATION]

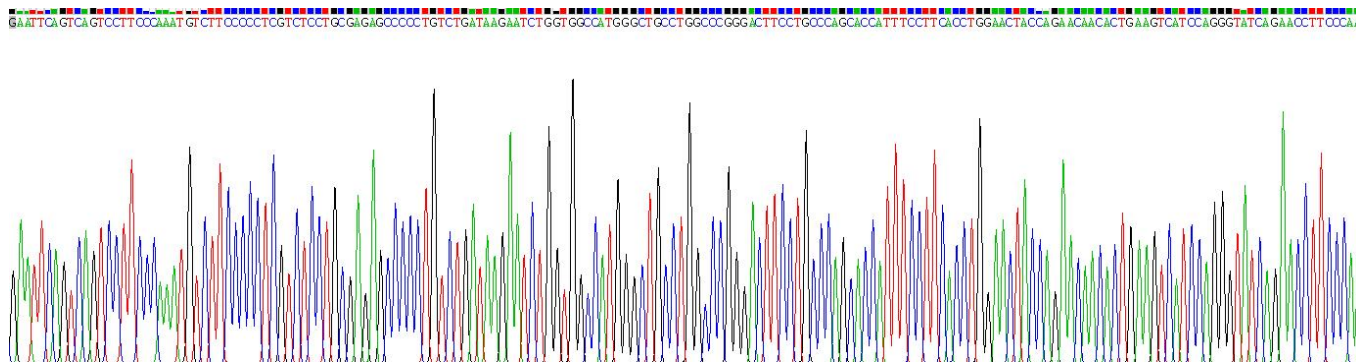


Figure . Gene Sequencing (extract)



Figure. SDS-PAGE

[IMPORTANT NOTE]

The kit is designed for research use only, we will not be responsible for any issue if the kit was used in clinical diagnostic or any other procedures.