

**RPB029Hu02 10µg**

**Recombinant Integrin Alpha 2B (ITGa2B)**

**Organism Species: *Homo sapiens (Human)***

***Instruction manual***

FOR RESEARCH USE ONLY

NOT FOR USE IN CLINICAL DIAGNOSTIC PROCEDURES

---

12th Edition (Revised in Aug, 2016)

**[ PROPERTIES ]**

**Source:** Prokaryotic expression

**Host:** *E.coli*

**Residues:** Leu32~Val485

**Tags:** N-terminal His Tag

**Subcellular Location:** Membrane

**Purity:** > 90%

**Traits:** Freeze-dried powder

**Buffer formulation:** 20mM Tris, 150mM NaCl, pH8.0, containing 0.01% SKL, 5% Trehalose.

**Original Concentration:** 400µg/mL

**Applications:** Positive Control; Immunogen; SDS-PAGE; WB.

(May be suitable for use in other assays to be determined by the end user.)

**Predicted isoelectric point:** 4.8

**Predicted Molecular Mass:** 52.9kDa

**Accurate Molecular Mass:** 53kDa as determined by SDS-PAGE reducing conditions.

**[ USAGE ]**

Reconstitute in 20mM Tris, 150mM NaCl (pH8.0) to a concentration of 0.1-1.0 mg/mL. Do not vortex.

**[ STORAGE AND STABILITY ]**

**Storage:** Avoid repeated freeze/thaw cycles.

Store at 2-8°C for one month.

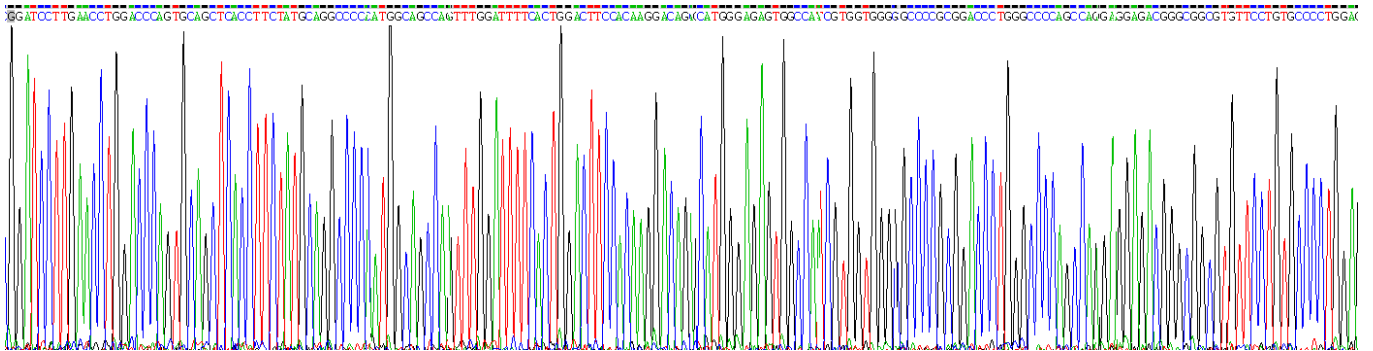
Aliquot and store at -80°C for 12 months.

**Stability Test:** The thermal stability is described by the loss rate. The loss rate was determined by accelerated thermal degradation test, that is, incubate the protein at 37°C for 48h, and no obvious degradation and precipitation were observed. The loss rate is less than 5% within the expiration date under appropriate storage condition.

**[ SEQUENCE ]**

LNLDPVQLT FYAGPNGSQF  
 GFSLDFHKDS HGRVAIVVGA PRTLGPSQEE TGGVFLCPWR AEGGQCPSLL  
 FDLRDETRNV GSQTLQTFKA RQGLGASVVS WSDVIVACAP WQHWNVLEKT  
 EEAEKTPVGS CFLAQPESEGR RAEYSPCRGN TLSRIYVEND FSWDKRYCEA  
 GFSSVVTQAG ELVLGAPGGY YFLGLLAQAP VADIFSSYRP GILLWHVSSQ  
 SLSFDSSNPE YFDGYWGYSV AVGEFDGDLN TTEYVVGAPT WSWTLGAVEI  
 LDSYYQRLHR LRGEQMASYF GHSVAVTDVN GDGRHDLLVG APLYMESRAD  
 RKLAEVGRVY LFLQPRGPHA LGAPSLLLTG TQLYGRFGSA IAPLGDLDRD  
 GYNDIAVAAP YGGPSGRGQV LVFLGQSEGL RSRPSQVLDS PFPTGSAFGF  
 SLRGAVIDD NGYPDLIVGA YGANQVAVYR AQPVV

**[ IDENTIFICATION ]**



**Figure . Gene Sequencing (extract)**



Figure. SDS-PAGE

**[ IMPORTANT NOTE ]**

The kit is designed for research use only, we will not be responsible for any issue if the kit was used in clinical diagnostic or any other procedures.