

**RPB282Hu02 100µg**

**Recombinant Integrin Alpha V (ITGaV)**

**Organism Species: *Homo sapiens (Human)***

***Instruction manual***

FOR RESEARCH USE ONLY

NOT FOR USE IN CLINICAL DIAGNOSTIC PROCEDURES

---

12th Edition (Revised in Aug, 2016)

## [ **PROPERTIES** ]

**Source:** Prokaryotic expression

**Host:** *E.coli*

**Residues:** Phe31~Gly560

**Tags:** N-terminal His Tag

**Subcellular Location:** Membrane

**Purity:** > 90%

**Traits:** Freeze-dried powder

**Buffer formulation:** 20mM Tris, 150mM NaCl, pH8.0, containing 0.01% SKL, 5% Trehalose.

**Original Concentration:** 200µg/mL

**Applications:** Positive Control; Immunogen; SDS-PAGE; WB.

(May be suitable for use in other assays to be determined by the end user.)

**Predicted isoelectric point:** 5.0

**Predicted Molecular Mass:** 61.6kDa

**Accurate Molecular Mass:** 62kDa as determined by SDS-PAGE reducing conditions.

## [ **USAGE** ]

Reconstitute in 20mM Tris, 150mM NaCl (pH8.0) to a concentration of 0.1-1.0 mg/mL. Do not vortex.

## [ **STORAGE AND STABILITY** ]

**Storage:** Avoid repeated freeze/thaw cycles.

Store at 2-8°C for one month.

Aliquot and store at -80°C for 12 months.

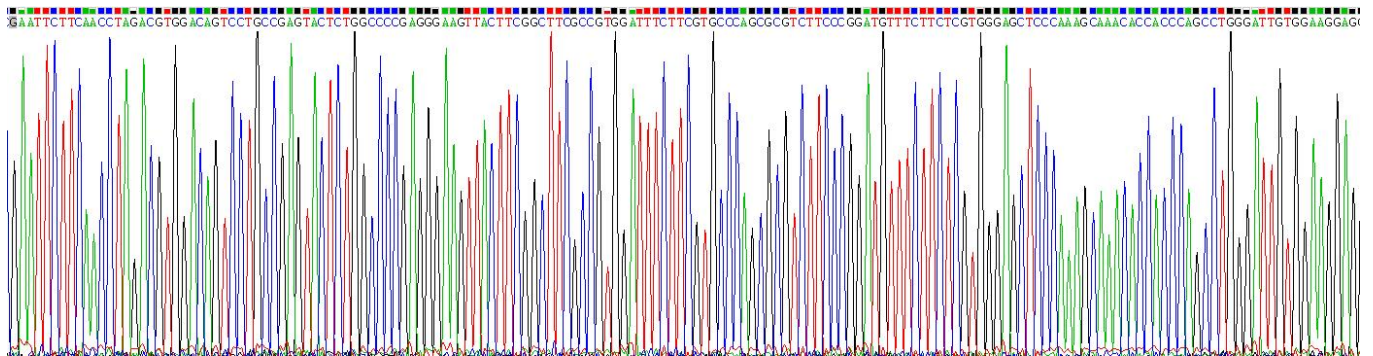
**Stability Test:** The thermal stability is described by the loss rate. The loss rate was determined by accelerated thermal degradation test, that is, incubate the protein at 37°C for 48h, and no obvious degradation and precipitation were observed. The loss rate is less than 5% within the expiration date under appropriate storage condition.

## [ **SEQUENCE** ]

```

                                FNLDVDSPA E YSGPEGSYFG
FAVDFVPSA SSRMFLVGA PKANTTQPGI VEGGQVLKCD WSSTRRCQPI
EFDATGNRDY AKDDPLEFKS HQWFGASVRS KQDKILACAP LYHWRTEMKQ
EREPVGTCLF QDGTKTVEYA PCRSQDIDAD GQGFCQGGFS IDFTKADRVL
LGGPGSFYWQ QQLISDQVAE IVSKYDPNVY SIKYNNQLAT RTAQAIFFDS
YLGYSVAVGD FNGDGIDDFV SGVPRAARTL GMVYIYDGKN MSSLYNFTGE
QMAAYFGFSV AATDINGDDY ADVFIGAPLF MDRGSDGKLQ EVGQVSVSLQ
RASGDFQTTK LNGFEVFARF GSAIAPLGD L DQDGFNDIAI AAPYGGEDKK
GIVYIFNGRS TGLNAVPSQI LEGQWAARSM PPSFGYSMKG ATDIDKNGYP
DLIVGAFGVD RAILYRARPV ITVNAGLEVY PSILNQDNKT CSLPGTALKV
SCFNVRFLCK ADGKGVLP RK LNFQVELLLD KLKQKGAIRR ALFLYSRSPS
HSKNMTISRG
    
```

**[ IDENTIFICATION ]**



**Figure . Gene Sequencing (extract)**

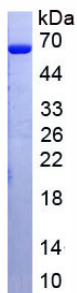


Figure. SDS-PAGE

**[ IMPORTANT NOTE ]**

The kit is designed for research use only, we will not be responsible for any issue if the kit was

used in clinical diagnostic or any other procedures.