

RPE765Ra01 10µg
Recombinant Interleukin 23 Receptor (IL23R)
Organism Species: *Rattus norvegicus* (Rat)
Instruction manual

FOR RESEARCH USE ONLY
NOT FOR USE IN CLINICAL DIAGNOSTIC PROCEDURES

12th Edition (Revised in Aug, 2016)

[PROPERTIES]

Source: Prokaryotic expression

Host: *E.coli*

Residues: Ile25~Leu355

Tags: N-terminal His and GST Tag

Subcellular Location: Membrane

Purity: > 90%

Traits: Freeze-dried powder

Buffer formulation: 20mM Tris, 150mM NaCl, pH8.0, containing 0.01% SKL, 5% Trehalose.

Original Concentration: 200µg/mL

Applications: Positive Control; Immunogen; SDS-PAGE; WB.

(May be suitable for use in other assays to be determined by the end user.)

Predicted isoelectric point: 8.4

Predicted Molecular Mass: 68.0kDa

Accurate Molecular Mass: 68kDa as determined by SDS-PAGE reducing conditions.

[USAGE]

Reconstitute in 20mM Tris, 150mM NaCl (pH8.0) to a concentration of 0.1-1.0 mg/mL. Do not vortex.

[STORAGE AND STABILITY]

Storage: Avoid repeated freeze/thaw cycles.

Store at 2-8°C for one month.

Aliquot and store at -80°C for 12 months.

Stability Test: The thermal stability is described by the loss rate. The loss rate was determined by accelerated thermal degradation test, that is, incubate the protein at 37°C for 48h, and no obvious degradation and precipitation were observed. The loss rate is less than 5% within the expiration date under appropriate storage condition.

[SEQUENCE]

```

                                IATINC SGNMWVEPGE IFQMGMNVSV
YCQEALKNCR PRNLHFYKNG FKERFHITRI NRTTARVWYK GFSEPHASMY
CTAECPRGFQ ETLICGKDIS SGYPPDAPSN MTCVIYEYSG NMTCTWNTGK
PTYIDTKYTV HVKSLETEEQ QQYLASNIVN ISTDQLQGR KYLVWVQAVN
ALGMENSQQL QVHLDDIVIP SPSIISRAET TNANVPKTII YWKSIMTGK
VFCEMRYKAT TNQTWNVKEF DTNYTYVQQS EFYLEPNSKY VFQVRCQGTG
KRNWQPWSSP FVHQTPQTAS QVTSKPPHEP QKIEMLTATI FKGHSTSDNS
QDIGL

```

[IDENTIFICATION]

AGACATGACATAACTGCTCGGDAAGTGGGTGACCGGGTGAATTTTCAGATGGGATGATGTTTCGATATTCGACAGAGCTCTAAGACTGCGCCGAGGATCTCCTTTTAAAAATGGCTTCAWAGWATTTTCAATCGAGGATTAATAGWAGAGCTCGGTTTGGTAAAGGCTTTGGGACCTAGGCTCAAGATTCACCTGAGGT

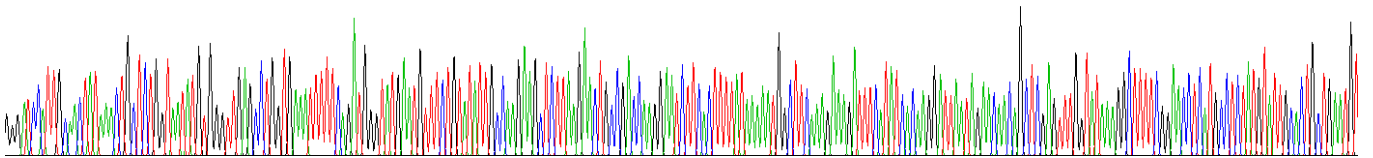
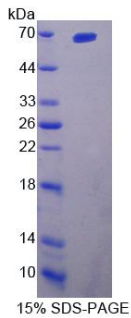


Figure . Gene Sequencing (extract)



[IMPORTANT NOTE]

The kit is designed for research use only, we will not be responsible for any issue if the kit was used in clinical diagnostic or any other procedures.