

**RPB505Hu01 100µg**

**Recombinant Interleukin 3 Receptor Alpha (IL3Ra)**

**Organism Species: Homo sapiens (Human)**

***Instruction manual***

FOR IN VITRO USE AND RESEARCH USE ONLY

NOT FOR USE IN CLINICAL DIAGNOSTIC PROCEDURES

---

---

11th Edition (Revised in May, 2016)

## **[ PROPERTIES ]**

**Source:** Prokaryotic expression.

**Host:** *E. coli*

**Residues:** Thr19~Phe158

**Tags:** N-terminal His-Tag

**Tissue Specificity:** Lung, Brain, Pancreas.

**Subcellular Location:** Membrane; Single-pass type I membrane protein.

**Purity:** >98%

**Traits:** Freeze-dried powder

**Buffer formulation:** PBS, pH7.4, containing 1mM DTT, 5% trehalose, 0.01% sarcosyl and Proclin300.

**Original Concentration:** 200ug/mL

**Applications:** SDS-PAGE; WB; ELISA; IP; CoIP; Reporter Assays; Purification; Amine Reactive Labeling.

(May be suitable for use in other assays to be determined by the end user.)

**Predicted isoelectric point:** 8.8

**Predicted Molecular Mass:** 17.3kDa

**Accurate Molecular Mass:** 19kDa as determined by SDS-PAGE reducing conditions.

## **[ USAGE ]**

Reconstitute in PBS (pH7.4) to a concentration of 0.1-1.0 mg/mL. Do not vortex.

## [ STORAGE AND STABILITY ]

**Storage:** Avoid repeated freeze/thaw cycles.

Store at 2-8°C for one month.

Aliquot and store at -80°C for 12 months.

**Stability Test:** The thermal stability is described by the loss rate. The loss rate was determined by accelerated thermal degradation test, that is, incubate the protein at 37°C for 48h, and no obvious degradation and precipitation were observed. The loss rate is less than 5% within the expiration date under appropriate storage condition.

## [ SEQUENCE ]

```
TK EGGKPWAGAE NLTCWIHDVD FLSCSWAVGP  
GAPADVQYDL YLNVANRRQQ YECLHYKTD A QGTRIGCRFD DISRLSSGSQ  
SSHILVRGRS AAFGIPCTDK FVVSQIEIL TPPNMTAKCN KTHSFMHWKM  
RSHFNRFK
```

## [ IDENTIFICATION ]

ATCGAGGAGGTGGAGAGCTTGGCGAGTCCGAGGATCTGACCTCTGATGATGAGTGGATTTCTTGAGCTTGAGCTGGCCGCTGACACCGGGGGGCGGGAGCTGGAGTGGAGCTGTACTGACCTGCACGGTCCAGGTCACAGTACGAGTGTCTACTCAAAAGCGATCTCAGGAGACAGTATGGGTG  
TREGGCKPFVAGAEHLTCVIFHDVDFLSCSFAVYGF GAPADVQYDLYLEHVAKRQQYECLHYKTD A Q G T R I G C

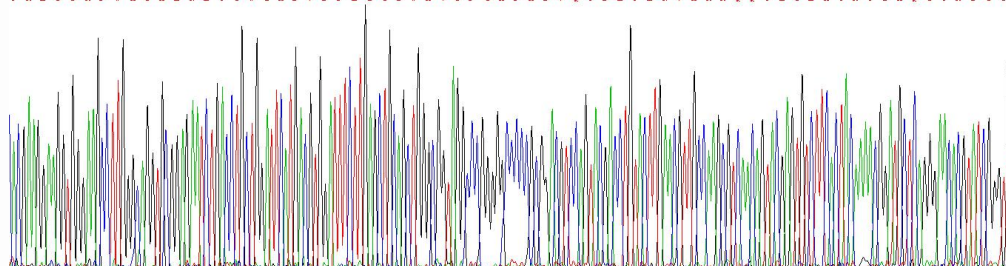


Figure 1. Gene Sequencing (Extract)

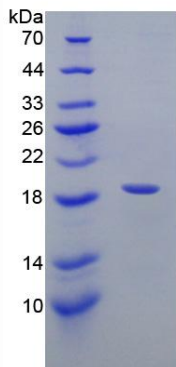


Figure 2. SDS-PAGE