

RPS211Mu01 10 μ g

Recombinant Keratin 25 (KRT25)

Organism Species: *Mus musculus* (Mouse)

Instruction manual

FOR RESEARCH USE ONLY

NOT FOR USE IN CLINICAL DIAGNOSTIC PROCEDURES

12th Edition (Revised in Aug, 2016)

[**PROPERTIES**]

Source: Prokaryotic expression

Host: *E.coli*

Residues: Met1~Asn446

Tags: N-terminal His Tag

Subcellular Location: Cytoplasm

Purity: > 95%

Traits: Freeze-dried powder

Buffer formulation: 20mM Tris, 150mM NaCl, pH8.0, containing 0.01% SKL, 5% Trehalose.

Original Concentration: 200µg/mL

Applications: Positive Control; Immunogen; SDS-PAGE; WB.

(May be suitable for use in other assays to be determined by the end user.)

Predicted isoelectric point: 4.7

Predicted Molecular Mass: 52.6KDa

Accurate Molecular Mass: 53kDa as determined by SDS-PAGE reducing conditions.

[**USAGE**]

Reconstitute in 20mM Tris, 150mM NaCl (pH8.0) to a concentration of 0.1-1.0 mg/mL. Do not vortex.

[**STORAGE AND STABILITY**]

Storage: Avoid repeated freeze/thaw cycles.

Store at 2-8°C for one month.

Aliquot and store at -80°C for 12 months.

Stability Test: The thermal stability is described by the loss rate. The loss rate was determined by accelerated thermal degradation test, that is, incubate the protein at 37°C for 48h, and no obvious degradation and precipitation were observed. The loss rate is less than 5% within the expiration date under appropriate storage condition.

[**SEQUENCE**]

```

MSLRLSSGSR RSYARPSTGS LRGASFGAGN ACGVAGIGSG FSCAFGGSST
GGNTGVANSC AGFTVNEGGL LSGNEKVTMQ NLNDRLASYL DNVQALQEAN
ADLEQKIKGW YEKFGPGSCR GLDHDYSRYF PIIDDLKNQI ITSTTSNANA
VLQIDNARLT ADDFRLKYEN ELALHQSVEA DVNGLRRVLD EITLCRTDLE
IQYETLSEEL TYLKKNHKEE MQALQCAAGG NVNDEMNAAP GVDLTVLLNN
MRAEYEALAE QNRRDAEAWF QEKSASLQQQ ITEDVGATTS ARNELTEMKR
TLQTLIELQ SLLATKHSLE CSLTETEGNY CTQLAQIQAQ ISALEEQLHQ
VRTETEGQKL EYEQLLNKVA HLEKEIETYC LLIGGDEGAC KSSSYKSKDY
GSGNAGNQIK DPVKAIVVKK VLEEVDQRSK ILTTRLHSLE EKSQSN
  
```

[IDENTIFICATION]

CGAATTCATGTCCTCTTCGCTTTCAGTGGATCCAGGAGGTCCTATGCTCGGCCCGCACAGGCTCAGGGGAGCCAGCTTCGGAGCTGGAAATGCATGTGGCGGTGCAGGCATTGGAAAGTGCTTCTCCTGCGCCCTTCGGGGCCAGCTCCACAGGGAAMCAGGGGGTGCACAC

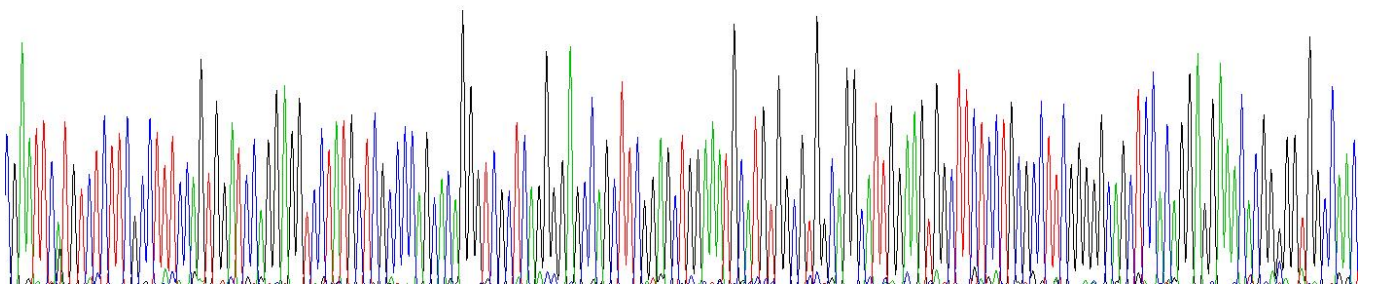
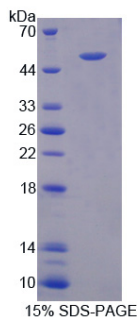


Figure . Gene Sequencing (extract)



[IMPORTANT NOTE]

The kit is designed for research use only, we will not be responsible for any issue if the kit was used in clinical diagnostic or any other procedures.