

RPH755Hu01 100µg

Recombinant Kynurenine-3-Monooxygenase (KMO)

Organism Species: *Homo sapiens (Human)*

Instruction manual

FOR RESEARCH USE ONLY

NOT FOR USE IN CLINICAL DIAGNOSTIC PROCEDURES

13th Edition (Revised in Aug, 2023)

[PROPERTIES]

Source: Prokaryotic expression

Host: *E.coli*

Residues: Met1~Ser374

Tags: N-terminal His Tag

Subcellular Location: Mitochondrion

Purity: > 90%

Traits: Freeze-dried powder

Buffer formulation: 20mM Tris, 150mM NaCl, pH8.0, containing 1mM EDTA, 1mM DTT, 0.01% SKL, 5% Trehalose and Proclin300.

Original Concentration: 900µg/mL

Applications: Positive Control; Immunogen; SDS-PAGE; WB.

(May be suitable for use in other assays to be determined by the end user.)

Predicted isoelectric point: 8.0

Predicted Molecular Mass: 46.0kDa

Accurate Molecular Mass: 45kDa as determined by SDS-PAGE reducing conditions.

[USAGE]

Reconstitute in 20mM Tris, 150mM NaCl (pH8.0) to a concentration of 0.1-1.0 mg/mL. Do not vortex.

[STORAGE AND STABILITY]

Storage: Avoid repeated freeze/thaw cycles.

Store at 2-8°C for one month.

Aliquot and store at -80°C for 12 months.

Stability Test: The thermal stability is described by the loss rate. The loss rate was determined by accelerated thermal degradation test, that is, incubate the protein at 37°C for 48h, and no obvious degradation and precipitation were observed. The loss rate is less than 5% within the expiration date under appropriate storage condition.

[SEQUENCE]

```

MDSSVIQRKK VAVIGGGLVG SLQACFLAKR NFQIDVYEAR EDTRVATFTR
GRSINLALSH RGRQALKAVG LEDQIVSQGI PMRARMIHSL SGKKAIPYG
TKSQYILSVS RENLNKDLLT AAKEYPNVKM HFNHRLKCN PEEGMITVLG
SDKVPKDVTC DLIVGCDGAY STVRSHLMKK PRFDYSQQYI PHGYMELTIP
PKNGDYAMEP NYLHIWPRNT FMMIALPNMN KSFTCTLFMP FEEFEKLLTS
NDVVDFQKY FPDAIPLIGE KLLVQDFLL PAQPMISVKC SSFHFKSHCV
LLGDAAHAIV PFFGQGMNAG FEDCLVDEL MDKFSNDLSL CLPVFSRLRI
PDDHAISDLS MYNYIEMRAH VNSS
    
```

[IDENTIFICATION]

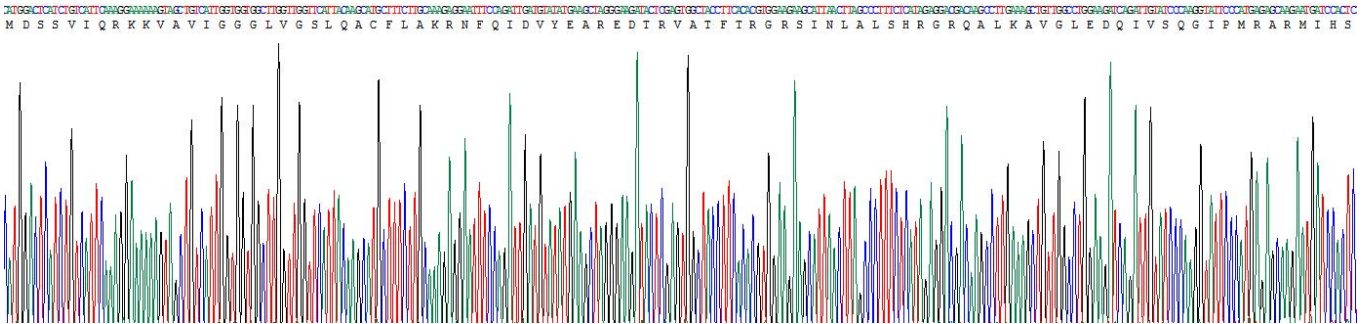


Figure. Gene Sequencing (Extract)

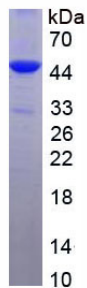


Figure. SDS-PAGE

[IMPORTANT NOTE]

The kit is designed for research use only, we will not be responsible for any issue if the kit was used in clinical diagnostic or any other procedures.