

RPC084Hu01 100µg

Recombinant Laminin Gamma 3 (LAMC3)

Organism Species: Homo sapiens (Human)

Instruction manual

FOR IN VITRO USE AND RESEARCH USE ONLY

NOT FOR USE IN CLINICAL DIAGNOSTIC PROCEDURES

10th Edition (Revised in Jan, 2014)

[PROPERTIES]

Residues: Cys901~Gly1100

Tags: Two N-terminal Tags, His-tag and GST-tag

Accession: Q9Y6N6

Host: *E. coli*

Subcellular Location: Secreted, extracellular space, extracellular matrix, basement membrane.

Purity: >90%

Endotoxin Level: <1.0EU per 1µg
(determined by the LAL method).

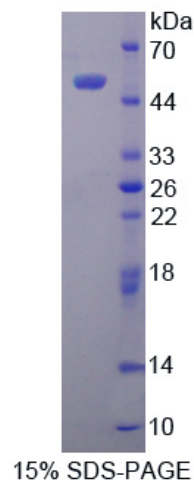
Formulation: Supplied as lyophilized form in PBS, pH7.4, containing 5% trehalose, 0.01% sarcosyl.

Predicted isoelectric point: 7.8

Predicted Molecular Mass: 51.7kDa

Applications: SDS-PAGE; WB; ELISA; IP.

(May be suitable for use in other assays to be determined by the end user.)



[USAGE]

Reconstitute in sterile PBS, pH7.2-pH7.4.

[STORAGE AND STABILITY]

Storage: Avoid repeated freeze/thaw cycles.

Store at 2-8°C for one month.

Aliquot and store at -80°C for 12 months.

Stability Test: The thermal stability is described by the loss rate of the target protein. The loss rate was determined by accelerated thermal degradation test, that is, incubate the protein at 37°C for 48h, and no obvious degradation and precipitation were observed. (Referring from China Biological Products Standard, which was calculated by the Arrhenius equation.) The loss of this protein is less than 5% within the expiration date under appropriate storage condition.

[SEQUENCES]

The sequence of the target protein is listed below.

CYPGFFDLQP GRGCRSCKCH PLGSQEDQCH PKTGQCTCRP GVTGQACDRC
QLGFFGFSGIK GCRACRCSPL GAASAQCHEN GTCVCRPGFE GYKCDRCHDN
FFLTADGTHC QQCPSCYALV KEEAAKLKAR LTLTEGWLQG SDCGSPWGPL DILLGEAPRG
DVYQGHLLP GAREAFLEQM MSLEGAVKAA REQLQRLNKG