

RPB859Mu01 10 μ g

Recombinant Lectin Like Oxidized Low Density Lipoprotein Receptor 1 (LOX1)

Organism Species: *Mus musculus* (Mouse)

Instruction manual

FOR RESEARCH USE ONLY

NOT FOR USE IN CLINICAL DIAGNOSTIC PROCEDURES

12th Edition (Revised in Aug, 2016)

[**PROPERTIES**]

Source: Prokaryotic expression

Host: *E.coli*

Residues: Arg60~Pro312

Tags: N-terminal His Tag

Subcellular Location: Membrane

Purity: > 97%

Traits: Freeze-dried powder

Buffer formulation: 100mMNaHCO₃, 500mMNaCl, pH8.3, containing 0.01% SKL, 5% Trehalose.

Original Concentration: 200µg/mL

Applications: Positive Control; Immunogen; SDS-PAGE; WB.

(May be suitable for use in other assays to be determined by the end user.)

Predicted isoelectric point: 6.9

Predicted Molecular Mass: 33.1kDa

Accurate Molecular Mass: 33kDa as determined by SDS-PAGE reducing conditions.

[**USAGE**]

Reconstitute in 100mM NaHCO₃, 500mM NaCl (pH8.3) to a concentration of 0.1-1.0 mg/mL. Do not vortex.

[**STORAGE AND STABILITY**]

Storage: Avoid repeated freeze/thaw cycles.

Store at 2-8°C for one month.

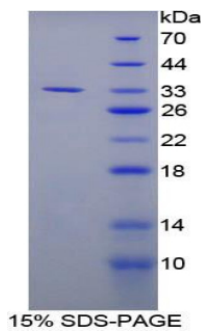
Aliquot and store at -80°C for 12 months.

Stability Test: The thermal stability is described by the loss rate. The loss rate was determined by accelerated thermal degradation test, that is, incubate the protein at 37°C for 48h, and no obvious degradation and precipitation were observed. The loss rate is less than 5% within the expiration date under appropriate storage condition.

[SEQUENCE]

R QVSDLLKQYQ ANLTQQDRIL EGQMLAQQKA ENTSQESKKE
LKGKIDTLTQ KLNEKSKEQE ELLQKNQNLQ EALQRAANSS EESQRELKGG
IDTITRKLDE KSKEQEELLQ MIQNLQEALQ RAANSSEESQ RELKKGIDTL
TLKLNEKSKE QEELLQKNQN LQEALQRAAN FSGPCPDWL WHKENCYLFH
GPFWEKNRQ TCQSLGGQLL QINGADDLTF ILQAISHTTS PFWIGLHRKK
PGQPWLWENG TP

[IDENTIFICATION]



[IMPORTANT NOTE]

The kit is designed for research use only, we will not be responsible for any issue if the kit was used in clinical diagnostic or any other procedures.