

RPC564Mu01 50µg

Recombinant Legumain (LGMN)

Organism Species: *Mus musculus* (Mouse)

Instruction manual

FOR RESEARCH USE ONLY

NOT FOR USE IN CLINICAL DIAGNOSTIC PROCEDURES

13th Edition (Revised in Aug, 2023)

[PROPERTIES]

Source: Prokaryotic expression

Host: *E.coli*

Residues: Val18~Tyr435

Tags: N-terminal His Tag

Subcellular Location: Lysosome

Purity: > 97%

Traits: Freeze-dried powder

Buffer formulation: 20mM Tris, 150mM NaCl, pH8.0, containing 1mM EDTA, 1mM DTT, 0.01% SKL, 5% Trehalose and Proclin300.

Original Concentration: 200µg/mL

Applications: Positive Control; Immunogen; SDS-PAGE; WB.

(May be suitable for use in other assays to be determined by the end user.)

Predicted isoelectric point: 5.9

Predicted Molecular Mass: 51.3KDa

Accurate Molecular Mass: 51kDa as determined by SDS-PAGE reducing conditions.

[USAGE]

Reconstitute in 20mM Tris, 150mM NaCl (pH8.0) to a concentration of 0.1-1.0 mg/mL. Do not vortex.

[STORAGE AND STABILITY]

Storage: Avoid repeated freeze/thaw cycles.

Store at 2-8°C for one month.

Aliquot and store at -80°C for 12 months.

Stability Test: The thermal stability is described by the loss rate. The loss rate was determined by accelerated thermal degradation test, that is, incubate the protein at 37°C for 48h, and no obvious degradation and precipitation were observed. The loss rate is less than 5% within the expiration date under appropriate storage condition.

[SEQUENCE]

```

          VPV  GVDDPEDGGK  HWVVIVAGSN  GWYNYRHQAD
ACHAYQIIHR  NGIPDEQIIV  MMYDDIANSE  ENTPGVVIN  RPNGTDVYKG
VLKDYTGEDV  TPENFLAVLR  GDAEAVKGGK  SGKVLKSGPR  DHVFIYFTDH
GATGILVFPN  DDLHVKDLNK  TIRYMYEHKM  YQKMVFYIEA  CESGSMNHL
PDDINVYATT  AANPKESSYA  CYYDEERGTY  LGDWYSVNW  ESDVEDLTK
ETLHKQYHLV  KSHTNTSHVM  QYGNKSISTM  KVMQFQGMKH  RASSPISLPP
VTHLDLTPSP  DVPLTILKRK  LLRTNDVKES  QNLIGQIQQF  LDARHVIEKS
VHKIVSLLAG  FGETAERHLS  ERTMLTAHDC  YQEAVTHFRT  HCFNWHSVTY
EHALRYLYVL  ANLCEAPYPI  DRIEMAMDKV  CLSHY
    
```

[IDENTIFICATION]

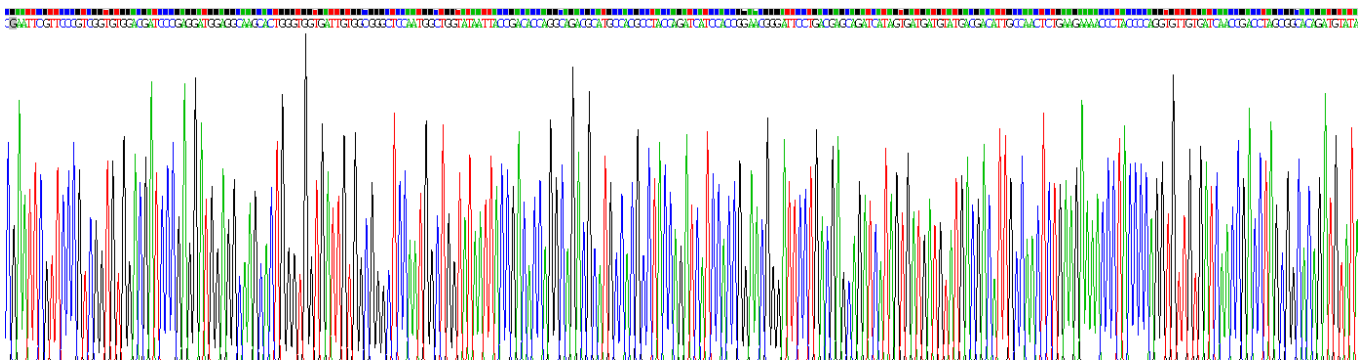


Figure . Gene Sequencing (extract)

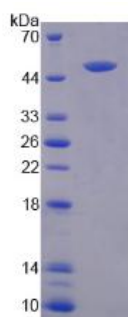


Figure. SDS-PAGE

[IMPORTANT NOTE]

The kit is designed for research use only, we will not be responsible for any issue if the kit was used in clinical diagnostic or any other procedures.