

RPA386Ra01 50µg

Recombinant Lipoprotein lipase (LPL)

Organism Species: *Rattus norvegicus* (Rat)

Instruction manual

FOR RESEARCH USE ONLY

NOT FOR USE IN CLINICAL DIAGNOSTIC PROCEDURES

13th Edition (Revised in Aug, 2023)

[PROPERTIES]

Source: Prokaryotic expression

Host: *E.coli*

Residues: Ala28~Gly474

Tags: N-terminal His Tag

Subcellular Location: Membrane, Secreted

Purity: > 90%

Traits: Freeze-dried powder

Buffer formulation: 20mM Tris, 150mM NaCl, pH8.0, containing 0.01% skl, 5%Trehalose.

Original Concentration: 100µg/mL

Applications: Positive Control; Immunogen; SDS-PAGE; WB.

(May be suitable for use in other assays to be determined by the end user.)

Predicted isoelectric point: 8.2

Predicted Molecular Mass: 53.9kDa

Accurate Molecular Mass: 54kDa as determined by SDS-PAGE reducing conditions.

[USAGE]

Reconstitute in ddH₂O to a concentration of 0.1-1.0 mg/mL. Do not vortex.

[STORAGE AND STABILITY]

Storage: Avoid repeated freeze/thaw cycles.

Store at 2-8°C for one month.

Aliquot and store at -80°C for 12 months.

Stability Test: The thermal stability is described by the loss rate. The loss rate was determined by accelerated thermal degradation test, that is, incubate the protein at 37°C for 48h, and no obvious degradation and precipitation were observed. The loss rate is less than 5% within the expiration date under appropriate storage condition.

[SEQUENCE]

```

                                ADG GRDFSDIESK FALRTPEDA
EDTCHLIPGL ADSVSNCHFN HSSKTFVVIH GWTVTGMYES WVPKLVAALY
KREPDENVIV VDWLYRAQQH YPVSAGYTKL VGNDVARFIN WLEEEFNYP
DNLVHLLGYSL GAHAAGVAGS LTNKKVNRIT GLDPAGPNFE YAEAPSRLSP
DDADFVDVLH TFTRGSPGRS IGIQKPVGHV DIYPNGGTFQ PGCNIGEAIR
VIAEKGLGDV DQLVKCSHER SIHLFIDSL NEENPSKAYR CNSKEAFEKG
LCLSCRKNRC NNVGYEINKV RAKRSSKMYL KTRSQMPYKV FHYQVKIHFS
GTENDKQNNQ AFEISLYGTV AESENIPFTL PEVATNKTYS FLIYTEVDIG
ELLMMKWKWK NDSYFRWSDW WSSPSFVIEK IRVKAGETQK KVIFCAREKV
SHLQKGKDAV VFKCHKDLSL KKSG
    
```

[IDENTIFICATION]

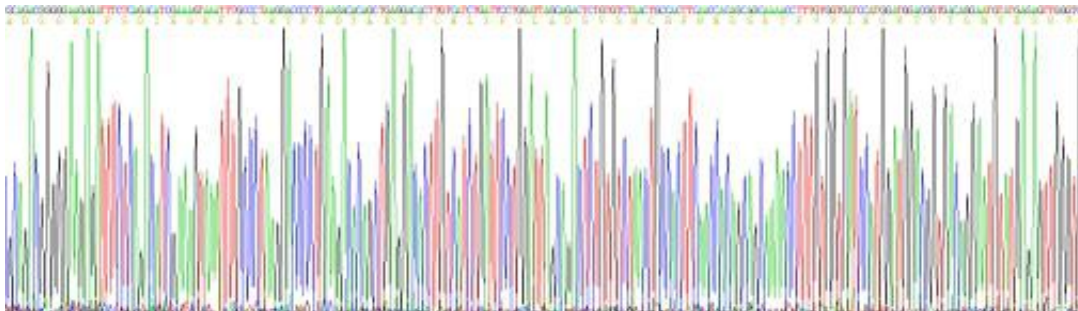


Figure . Gene Sequencing (extract)

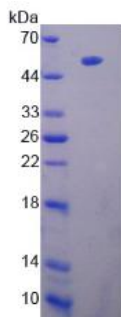


Figure. SDS-PAGE

[IMPORTANT NOTE]

The kit is designed for research use only, we will not be responsible for any issue if the kit was used in clinical diagnostic or any other procedures.