

**RPD386Hu01 50µg**

**Recombinant Mammary Serine Protease Inhibitor (Maspin)**

**Organism Species: *Homo sapiens (Human)***

***Instruction manual***

**FOR RESEARCH USE ONLY**

**NOT FOR USE IN CLINICAL DIAGNOSTIC PROCEDURES**

---

13th Edition (Revised in Aug, 2023)

## **[ PROPERTIES ]**

**Source:** Prokaryotic expression

**Host:** *E.coli*

**Residues:** Met1~Pro375

**Tags:** N-terminal His Tag

**Subcellular Location:** Secreted, Extracellular matrix

**Purity:** > 90%

**Traits:** Freeze-dried powder

**Buffer formulation:** PBS, pH7.4, containing 0.01% SKL, 5% Trehalose .

**Original Concentration:** 500µg/mL

**Applications:** Positive Control; Immunogen; SDS-PAGE; WB.

(May be suitable for use in other assays to be determined by the end user.)

**Predicted isoelectric point:** 5.7

**Predicted Molecular Mass:** 45.8kDa

**Accurate Molecular Mass:** 46kDa as determined by SDS-PAGE reducing conditions.

## **[ USAGE ]**

Reconstitute in 10mM PBS (pH7.4) to a concentration of 0.1-1.0 mg/mL. Do not vortex.

## **[ STORAGE AND STABILITY ]**

**Storage:** Avoid repeated freeze/thaw cycles.

Store at 2-8°C for one month.

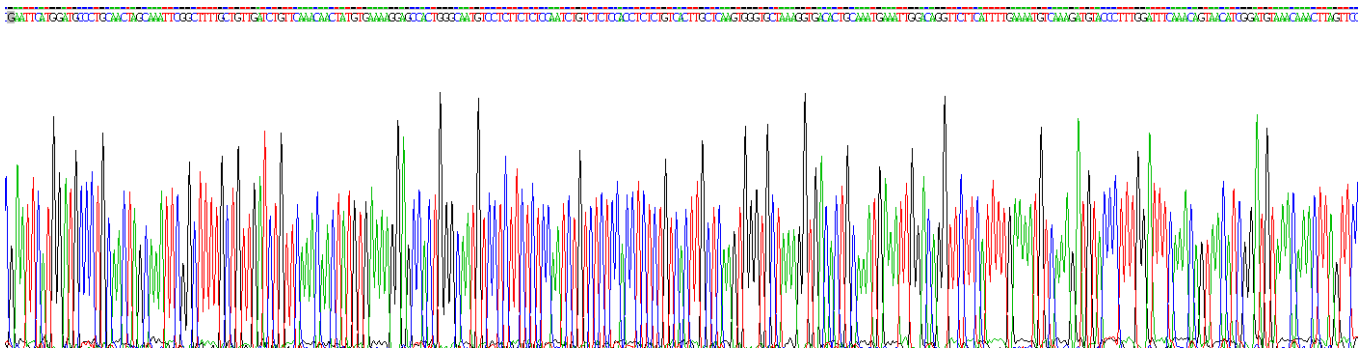
Aliquot and store at -80°C for 12 months.

**Stability Test:** The thermal stability is described by the loss rate. The loss rate was determined by accelerated thermal degradation test, that is, incubate the protein at 37°C for 48h, and no obvious degradation and precipitation were observed. The loss rate is less than 5% within the expiration date under appropriate storage condition.

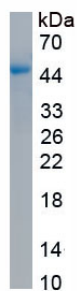
## **[ SEQUENCE ]**

```
MDALQLANSA FAVDLFKQLC EKEPLGNVLF SPICLSTSLA LAQVGAKGDT
ANEIGQVLHF ENVKDVPGF QTVTSDVNKL SSFYSLKLIK RLYVDKSLNL
STEFISSTKR PYAKELETVD FKDKLEETKG QINNSIKDLT DGHFENILAD
NSVNDQTKIL VVNAAYFVGK WMKKFSESET KECPRVNKT DTKPVQMMNM
EATFCMGNID SINCKIIELP FQNKHLSMFI LLPKDVEDS TGLEKIEKQL
NSESLSQWTN PSTMANAKVK LSIPKFKVEK MIDPKACLEN LGLKHIFSED
TSDFSGMSET KGVALSNVIH KVCLEITEDG GDSIEVPGAR ILQHKDELNA
DHPFIYIIRH NKTRNIIFFG KFCSP
```

## [ IDENTIFICATION ]



**Figure . Gene Sequencing (extract)**



**Figure. SDS-PAGE**

## [ IMPORTANT NOTE ]

The kit is designed for research use only, we will not be responsible for any issue if the kit was used in clinical diagnostic or any other procedures.