

RPA733Hu01 50ug

Recombinant Mannose Receptor C Type 2 (MRC2)

Organism Species: *Homo sapiens (Human)*

Instruction manual

FOR RESEARCH USE ONLY

NOT FOR USE IN CLINICAL DIAGNOSTIC PROCEDURES

12th Edition (Revised in Aug, 2016)

[**PROPERTIES**]

Source: Prokaryotic expression

Host: *E.coli*

Residues: Pro41~Lys505

Tags: N-terminal His Tag

Subcellular Location: Membrane

Purity: > 90%

Traits: Freeze-dried powder

Buffer formulation: 20mM Tris, 150mM NaCl, pH8.0, containing 0.01% skl, 5%Trehalose.

Original Concentration: 200µg/mL

Applications: Positive Control; Immunogen; SDS-PAGE; WB.

(May be suitable for use in other assays to be determined by the end user.)

Predicted isoelectric point: 5.1

Predicted Molecular Mass: 56.6kDa

Accurate Molecular Mass: 57kDa as determined by SDS-PAGE reducing conditions.

[**USAGE**]

Reconstitute in 20mM Tris, 150mM NaCl (pH8.0) to a concentration of 0.1-1.0 mg/mL. Do not vortex.

[**STORAGE AND STABILITY**]

Storage: Avoid repeated freeze/thaw cycles.

Store at 2-8°C for one month.

Aliquot and store at -80°C for 12 months.

Stability Test: The thermal stability is described by the loss rate. The loss rate was determined by accelerated thermal degradation test, that is, incubate the protein at 37°C for 48h, and no obvious degradation and precipitation were observed. The loss rate is less than 5% within the expiration date under appropriate storage condition.

[**SEQUENCE**]

```

                                                                 PNVFLIFSHG
LQGCLEAQQG QVRVTPACNT SLPAQRWKWV SRNRLFNLGT MQCLGTGWPG
TNTTASLGMV ECDREALNLR WHCRTLGDQL SLLLGARTSN ISKPGTLERG
DQTRSGQWRI YGSEEDLCAL PYHEVYTIQG NSHGKPCITP FKYDNQWFHG
CTSTGREDGH LWCATTQDYG KDERWGFCEI KSNDCECFWD KDQLTDSCYQ
FNFQSTLSWR EAWASCEQQG ADLLSITEIH EQTYINGLLT GYSSTLWIGL
NDLDTSGGWQ WSDNSPLKYL NWESDQPDNP SEENCVIRT ESSGGWQNRD
CSIALPYVCK KKPNAEPT PPDRWANVKV ECEPSWQPFQ GHCYRLQAEK
RSWQESKKAC LRGDDLVI HSMAELEFIT KQIKQVEEEL WIGLNDLKLQ
MNFESDGS LVSFTHWHPFE PNNFRDSLED CVTIWGPEGR WNDSPCNQSL
PSICK
    
```

[IDENTIFICATION]

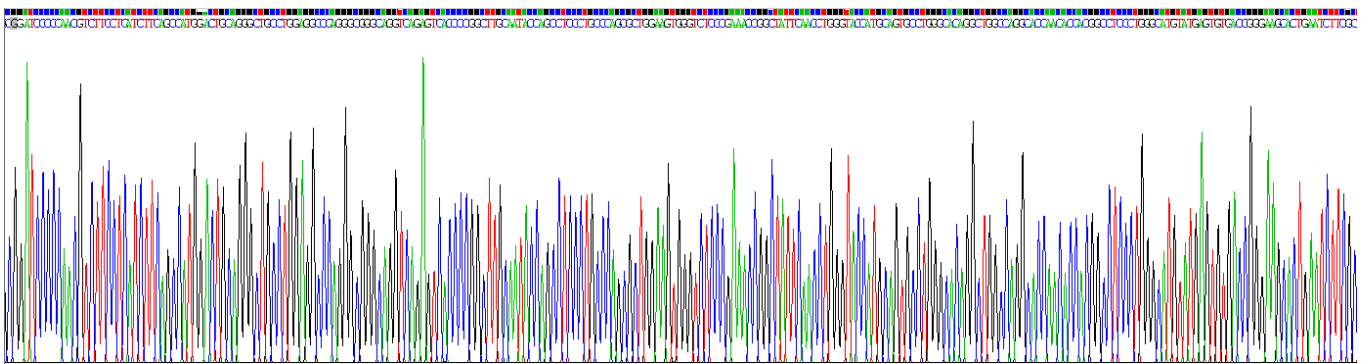


Figure . Gene Sequencing (extract)

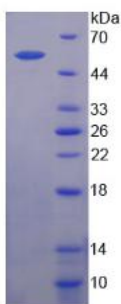


Figure. SDS-PAGE

[IMPORTANT NOTE]

The kit is designed for research use only, we will not be responsible for any issue if the kit was

used in clinical diagnostic or any other procedures.