

RPB286Hu01 10µg

Recombinant Milk Fat Globule EGF Factor 8 (MFGE8)

Organism Species: *Homo sapiens (Human)*

Instruction manual

FOR RESEARCH USE ONLY

NOT FOR USE IN CLINICAL DIAGNOSTIC PROCEDURES

13th Edition (Revised in Aug, 2023)

[PROPERTIES]

Source: Prokaryotic expression

Host: *E.coli*

Residues: His65~Ile302

Tags: N-terminal His and GST Tag

Subcellular Location: Membrane

Purity: > 90%

Traits: Freeze-dried powder

Buffer formulation: 20mM Tris, 150mM NaCl, pH8.0, containing 0.01% skl, 5%Trehalose.

Original Concentration: 50µg/mL

Applications: Positive Control; Immunogen; SDS-PAGE; WB.

(May be suitable for use in other assays to be determined by the end user.)

Predicted isoelectric point: 7.8

Predicted Molecular Mass: 56.6kDa

Accurate Molecular Mass: 60kDa as determined by SDS-PAGE reducing conditions.

Phenomenon explanation:

The possible reasons that the actual band size differs from the predicted are as follows:

- 1.Splice variants: Alternative splicing may create different sized proteins from the same gene.
2. Relative charge: The composition of amino acids may affects the charge of the protein.
3. Post-translational modification: Phosphorylation, glycosylation, methylation etc.
4. Post-translation cleavage: Many proteins are synthesized as pro-proteins, and then cleaved to give the active form.
5. Polymerization of the target protein: Dimerization, multimerization etc.

[USAGE]

Reconstitute in ddH₂O to a concentration of 0.1-0.5 mg/mL. Do not vortex.

[STORAGE AND STABILITY]

Storage: Avoid repeated freeze/thaw cycles.

Aliquot and store at -80°C for 12 months.

[SEQUENCE]

HCETKC VEPLGLENGN IANSQIAASS VRVTFGLGLQH
WVPELARLNR AGMVNAWTPS SNDDNPWIVQ NLLRRMWVTG VVTQGASRLA
SHEYLKAFKV AYSLNGHEFD FIHDVNNKKHK EFVGNWNKNA VHVNLFETPV
EAQYVRLYPT SCHTACTLRF ELLGCELNGC ANPLGLKNNS IPDKQITASS
SYKTWGLHLF SWNPSYARLD KQGNFNAWVA GSYGNDQWLQ VDLGSSKEVT
GI

YVGGCTTCTACTGGGAGCGAATGGTGGGCTCTGGATGGGAAATGGCACTCGAGTCTCCCTATCTGGGGGCTCTTGGTTTCAGATTGGTGGGACTGGGGCTGAAGCGAGATGTCATTCCTGGCACTTGGCAATGGTGGTATCCCTGGATCGGAACTCTGGCGATGGGAAAGGGGGAGCA

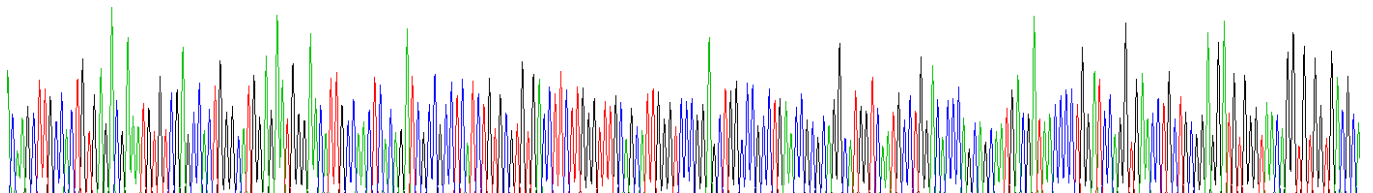


Figure . Gene Sequencing (extract)

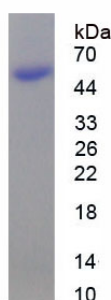


Figure. SDS-PAGE

[IMPORTANT NOTE]

The kit is designed for research use only, we will not be responsible for any issue if the kit was used in clinical diagnostic or any other procedures.