

RPB954Ra01 50µg
Recombinant Monoamine Oxidase A (MAOA)
Organism Species: *Rattus norvegicus* (Rat)
Instruction manual

FOR RESEARCH USE ONLY
NOT FOR USE IN CLINICAL DIAGNOSTIC PROCEDURES

12th Edition (Revised in Aug, 2016)

[PROPERTIES]

Source: Prokaryotic expression

Host: *E.coli*

Residues: Leu+Thr2~Ser497

Tags: N-terminal His Tag

Subcellular Location: Membrane, Mitochondrion

Purity: > 90%

Traits: Freeze-dried powder

Buffer formulation: 100mMNaHCO₃, 500mMNaCl, pH8.3, containing 0.01% SKL, 5% Trehalose.

Original Concentration: 100µg/mL

Applications: Positive Control; Immunogen; SDS-PAGE; WB.

(May be suitable for use in other assays to be determined by the end user.)

Predicted isoelectric point: 6.9

Predicted Molecular Mass: 60.1kDa

Accurate Molecular Mass: 65kDa as determined by SDS-PAGE reducing conditions.

Phenomenon explanation:

The possible reasons that the actual band size differs from the predicted are as follows:

1. Splice variants: Alternative splicing may create different sized proteins from the same gene.
2. Relative charge: The composition of amino acids may affects the charge of the protein.
3. Post-translational modification: Phosphorylation, glycosylation, methylation etc.
4. Post-translation cleavage: Many proteins are synthesized as pro-proteins, and then cleaved to give the active form.
5. Polymerization of the target protein: Dimerization, multimerization etc.

[USAGE]

Reconstitute in ddH₂O to a concentration of 0-0.25 mg/mL. Do not vortex.

[STORAGE AND STABILITY]

Storage: Avoid repeated freeze/thaw cycles.

Store at 2-8°C for one month.

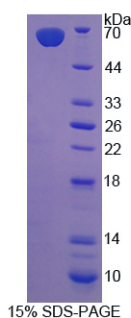
Aliquot and store at -80°C for 12 months.

Stability Test: The thermal stability is described by the loss rate. The loss rate was determined by accelerated thermal degradation test, that is, incubate the protein at 37°C for 48h, and no obvious degradation and precipitation were observed. The loss rate is less than 5% within the expiration date under appropriate storage condition.

[**SEQUENCE**]

```
LTDLEKPNLA GHMFDVGLIG GGISGLAAAK LLSEYKINVL VLEARDRVGG  
RTYTVRNEHV KWVDVGGAYV GPTQNRILRL SKELGIETYK VNVNERLVQY  
VKGKTYPRFG AFPPVWNPLA YLDYNNLWRT MDEMGEIPV DAPWQARHAQ  
EWDKMTMKDL IDKICWTKTA REFAYLFVNI NVTSEPHEVS ALWFLWYVRQ  
CGGTARIFSV TNGGQERKFV GGSGQVSEQI MLLGDKVKL SSPVTYIDQT  
DDNIIVETLN HEHYECKYVI SAIPPILTAK IHFKPELPPE RNQLIQRLPM  
GAVIKCMVYY KEAFWKKKDY CGCMIIEDDEE APIAITLDDT KPDGSLPAIM  
GFILARKADR QAKLHKDIRK RKICELYAKV LGSQEALYPV HYEENWCEE  
QYSGGCYTAY FPPGIMTQYG RVIRQPVGRI YFAGTETATQ WSGYMEGAVE  
AGERAAAREVL NALGKVAKKD IWVEEPESKD VPAIEITHTF LERNLPS
```

[**IDENTIFICATION**]



[**IMPORTANT NOTE**]

The kit is designed for research use only, we will not be responsible for any issue if the kit was used in clinical diagnostic or any other procedures.