

RPK115Hu01 50µg

Recombinant NLR Family, Pyrin Domain Containing Protein 3 (NLRP3)

Organism Species: *Homo sapiens (Human)*

Instruction manual

FOR RESEARCH USE ONLY

NOT FOR USE IN CLINICAL DIAGNOSTIC PROCEDURES

12th Edition (Revised in Aug, 2016)

[**PROPERTIES**]

Source: Prokaryotic expression

Host: *E.coli*

Residues: Cys770~Trp1036

Tags: N-terminal His Tag

Subcellular Location: Membrane, Nucleus, Secreted, Cytoplasm, Golgi apparatus, Endoplasmic reticulum lumen

Purity: > 90%

Traits: Freeze-dried powder

Buffer formulation: 20mM Tris, 150mM NaCl, pH8.0, containing 0.01% SKL, 5% Trehalose.

Original Concentration: 100µg/mL

Applications: Positive Control; Immunogen; SDS-PAGE; WB.

(May be suitable for use in other assays to be determined by the end user.)

Predicted isoelectric point: 5.7

Predicted Molecular Mass: 33kDa

Accurate Molecular Mass: 33kDa as determined by SDS-PAGE reducing conditions.

[**USAGE**]

Reconstitute in 20mM Tris, 150mM NaCl (pH8.0) to a concentration of 0.1-1.0 mg/mL. Do not vortex.

[**STORAGE AND STABILITY**]

Storage: Avoid repeated freeze/thaw cycles.

Store at 2-8°C for one month.

Aliquot and store at -80°C for 12 months.

Stability Test: The thermal stability is described by the loss rate. The loss rate was determined by accelerated thermal degradation test, that is, incubate the protein at 37°C for 48h, and no obvious degradation and precipitation were observed. The loss rate is less than 5% within the expiration date under appropriate storage condition.

[SEQUENCE]

```

C NIRRLWLGRC GLSHECCFDI SLVLSSNQKL
VELDLSDNAL GDFGIRLLCV GLKHLLCNLK KLWLVSCCLT SACCQDLASV
LSTSHSLTRL YVGENALGDS GVAILCEKAK NPQCNLQKLG LVNSGLTSVC
CSALSSVLST NQNLTHLYLR GNTLGDKGIK LLCEGLLHPD CKLQVLELDN
CNLTSHCCWD LSTLLTSSQS LRKLSLGNND LGDLGVMFMC EVLKQQSCLL
QNLGLSEMYF NYETKSALET LQEEKPELTV VFEPSW
    
```

[IDENTIFICATION]

CGATCCTGTAACATTCGGAGATTGTGGTTGGGGGCTGTGGGCTCTCCGATGAGTGCCTTCGGACATCTCCTTGGTCTCAGGAGCAACGAGAGCTGGTGGAGCTGGACCTGAGTGGACAAACCCCTGGSTGACTTCGGATCAGGACTTCTGTGTGTGGGACTGGAGCACTGTGTGTGCAATCTGAGGAGCTCTGGTTGGTCACTC

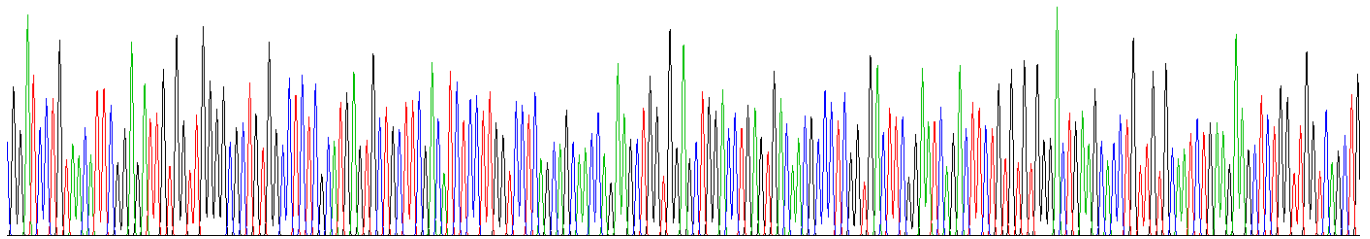


Figure . Gene Sequencing (extract)

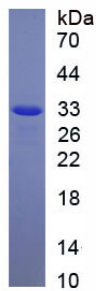


Figure. SDS-PAGE

[IMPORTANT NOTE]

The kit is designed for research use only, we will not be responsible for any issue if the kit was used in clinical diagnostic or any other procedures.