

RPB827Hu01 10µg

Recombinant Netrin 1 (Ntn1)

Organism Species: *Homo sapiens (Human)*

Instruction manual

FOR RESEARCH USE ONLY

NOT FOR USE IN CLINICAL DIAGNOSTIC PROCEDURES

13th Edition (Revised in Aug, 2023)

[PROPERTIES]

Source: Prokaryotic expression

Host: *E.coli*

Residues: Pro313~Pro565

Tags: N-terminal His and GST Tag

Subcellular Location: Secreted, Cytoplasm

Purity: > 90%

Traits: Freeze-dried powder

Buffer formulation: 20mM Tris, 150mM NaCl, pH8.0, containing 0.01% skl, 5%Trehalose.

Original Concentration: 80µg/mL

Applications: Positive Control; Immunogen; SDS-PAGE; WB.

(May be suitable for use in other assays to be determined by the end user.)

Predicted isoelectric point: 9.4

Predicted Molecular Mass: 55.5kDa

Accurate Molecular Mass: 58kDa as determined by SDS-PAGE reducing conditions.

[USAGE]

Reconstitute in ddH₂O to a concentration of 0.1-1.0 mg/mL. Do not vortex.

[STORAGE AND STABILITY]

Storage: Avoid repeated freeze/thaw cycles.

Store at 2-8°C for one month.

Aliquot and store at -80°C for 12 months.

Stability Test: The thermal stability is described by the loss rate. The loss rate was determined by accelerated thermal degradation test, that is, incubate the protein at 37°C for 48h, and no obvious degradation and precipitation were observed. The loss rate is less than 5% within the expiration date under appropriate storage condition.

[SEQUENCE]

PECDRCKP FHYDRPWQRA TAREANECVA CNCNLHARRC
 RFNMELYKLS GRKSGGVCLN CRHNTAGRHC HYCKEGFYRD MGKPITHRKA
 CKACDCHPVG AAGKTCNQTT GQCPCKDGVV GITCNRCAKG YQQRSPIAP
 CIKIPVAPPT TAASSVEEPE DCDSYCKASK GKLKMMMKKY CRKDYAVQIH
 ILKADKAGDW WKFTVNIISV YKQGTSRIRR GDQSLWIRSR DIACKCPKIK
 PLKKYLLLG N AEDSP

[IDENTIFICATION]

G A M T T C C T G A A T G C G A C C G T T T G C A C T A C G A C C G G C C C T G C A G G G G G C C A G G C C C C G G A G G C C A G G A G T G C G T G C C T G C A A C T G C A A C C T C C A T G C T G G G G C T G C A G A T T C A A C A T G G A G C T C T A T A A G C T A T C A G G G G G C A A G A G C G G G G G A G T C T G T C T C A A C T G C C G C A C

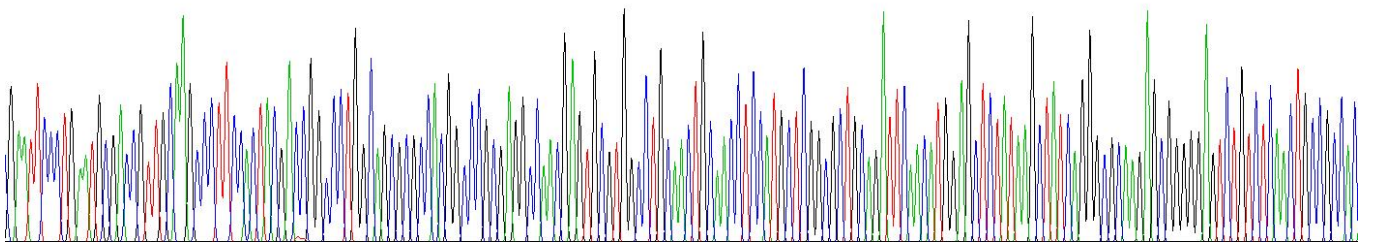


Figure . Gene Sequencing (extract)

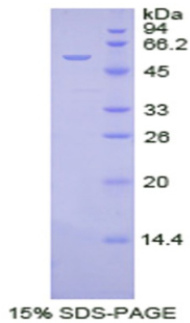


Figure. SDS-PAGE

[IMPORTANT NOTE]

The kit is designed for research use only, we will not be responsible for any issue if the kit was used in clinical diagnostic or any other procedures.