

**RPC680Ra01 100µg**

**Recombinant Nicastrin (NCSTN)**

**Organism Species: *Rattus norvegicus* (Rat)**

***Instruction manual***

FOR RESEARCH USE ONLY

NOT FOR USE IN CLINICAL DIAGNOSTIC PROCEDURES

---

12th Edition (Revised in Aug, 2016)

## [ **PROPERTIES** ]

**Source:** Prokaryotic expression

**Host:** *E.coli*

**Residues:** Val35~Gln534

**Tags:** N-terminal His Tag

**Subcellular Location:** Membrane

**Purity:** > 95%

**Traits:** Freeze-dried powder

**Buffer formulation:** 20mM Tris, 150mM NaCl, pH8.0, containing 0.01% SKL, 5% Trehalose.

**Original Concentration:** 200µg/mL

**Applications:** Positive Control; Immunogen; SDS-PAGE; WB.

(May be suitable for use in other assays to be determined by the end user.)

**Predicted isoelectric point:** 5.2

**Predicted Molecular Mass:** 59.1KDa

**Accurate Molecular Mass:** 59kDa as determined by SDS-PAGE reducing conditions.

## [ **USAGE** ]

Reconstitute in 20mM Tris, 150mM NaCl (pH8.0) to a concentration of 0.1-1.0 mg/mL. Do not vortex.

## [ **STORAGE AND STABILITY** ]

**Storage:** Avoid repeated freeze/thaw cycles.

Store at 2-8°C for one month.

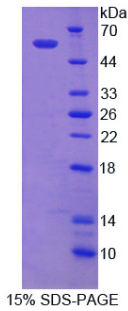
Aliquot and store at -80°C for 12 months.

**Stability Test:** The thermal stability is described by the loss rate. The loss rate was determined by accelerated thermal degradation test, that is, incubate the protein at 37°C for 48h, and no obvious degradation and precipitation were observed. The loss rate is less than 5% within the expiration date under appropriate storage condition.

## [ **SEQUENCE** ]

VERKIY IPLNKTAPCV  
 RLLNATHQIG CQSSISGDTG VIHVVEKEDD LKWVLTGPN PPYMLLEGK  
 LFTRDIMEKL KGETSRIAGL AVTLAKPNST SSFSPSVQCP NDGFGIYSNS  
 YGPEFAHCKK TLWNELGNGL AYDDFSFPIF LLEDENETKV IKQCYQDHNL  
 GQNGSAPSFP LCAMQLFSHM HAVISTATCM RRSFIQSTFS INPEIVCDPL  
 SDYNVWSMLK PINTSGGLEP DVRVVVAATR LDSRSFFWNV APGAESAVAS  
 FVTQLAAAEA LHKAPDVTTL PRNVMFVFFQ GETFDYIGSS RMVYDMENGK  
 FVRLLENIDS FVELGQVALR TSLELWMHTD PMSQKNESVK NQVEDLLVTL  
 EQSGADTPQV VLSRLVQSQA LPPSSLQRFL RARNISGVVL ADHSGSFHNR  
 YYQSIYDTAE NINVTYPESQ SPEEDLNFVT DTAKALADVA TVLARALYKL  
 AGGTNFNNSI QADPQTVTRL LYGFLVRANN SWFQ

**[ IDENTIFICATION ]**



**[ IMPORTANT NOTE ]**

The kit is designed for research use only, we will not be responsible for any issue if the kit was used in clinical diagnostic or any other procedures.