

**RPC683Mu01 10 $\mu$ g**  
**Recombinant Nucleoside Phosphorylase (NP)**  
**Organism Species: *Mus musculus* (Mouse)**  
***Instruction manual***

FOR RESEARCH USE ONLY  
NOT FOR USE IN CLINICAL DIAGNOSTIC PROCEDURES

---

12th Edition (Revised in Aug, 2016)

**[ PROPERTIES ]**

**Source:** Prokaryotic expression

**Host:** *E.coli*

**Residues:** Met1~Asp286

**Tags:** N-terminal His Tag

**Subcellular Location:** n/a

**Purity:** > 97%

**Traits:** Freeze-dried powder

**Buffer formulation:** 100mMNaHCO<sub>3</sub>, 500mMNaCl, pH8.3, containing 0.01% SKL, 5% Trehalose.

**Original Concentration:** 200µg/mL

**Applications:** Positive Control; Immunogen; SDS-PAGE; WB.

(May be suitable for use in other assays to be determined by the end user.)

**Predicted isoelectric point:** 5.6

**Predicted Molecular Mass:** 35.7kDa

**Accurate Molecular Mass:** 36kDa as determined by SDS-PAGE reducing conditions.

**[ USAGE ]**

Reconstitute in 100mM NaHCO<sub>3</sub>, 500mM NaCl (pH8.3) to a concentration of 0.1-1.0 mg/mL. Do not vortex.

**[ STORAGE AND STABILITY ]**

**Storage:** Avoid repeated freeze/thaw cycles.

Store at 2-8°C for one month.

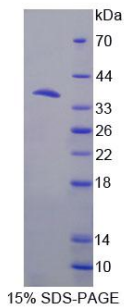
Aliquot and store at -80°C for 12 months.

**Stability Test:** The thermal stability is described by the loss rate. The loss rate was determined by accelerated thermal degradation test, that is, incubate the protein at 37°C for 48h, and no obvious degradation and precipitation were observed. The loss rate is less than 5% within the expiration date under appropriate storage condition.

**[ SEQUENCE ]**

MENEFTYEDY ETTAKWLLQH TEYRPQVAVI CGSGLGGLTA HLKEAQIFDY  
NEIPNFPQST VQGHAGRLVF GLLNGRCCVM MQGRFHMYEG YLSKVTFPV  
RVFHLLGVET LVVTNAAGGL NPNFEVGDIM LIRDHINLPG FCGQNPLRGP  
NDERFGVRFV AMSDAYDRDM RQKAFTAWKQ MGEQRKLQEG TYVMLAGPNF  
ETVAESRLK MLGADAVGMS TVPEVIVARH CGLRVFGFSL ITNKVMDYE  
NLEKANHMEV LDAGKAAAQT LERFVSILME SIPLPD

**[ IDENTIFICATION ]**



**[ IMPORTANT NOTE ]**

The kit is designed for research use only, we will not be responsible for any issue if the kit was used in clinical diagnostic or any other procedures.