

RPB332Hu03 10 μ g
Recombinant Ornithine Decarboxylase (ODC)
Organism Species: *Homo sapiens* (Human)
Instruction manual

FOR RESEARCH USE ONLY
NOT FOR USE IN CLINICAL DIAGNOSTIC PROCEDURES

12th Edition (Revised in Aug, 2016)

[PROPERTIES]

Source: Prokaryotic expression

Host: *E.coli*

Residues: Met1~Val461

Tags: N-terminal His Tag

Subcellular Location: Cytoplasm

Purity: > 90%

Traits: Freeze-dried powder

Buffer formulation: 20mM Tris, 150mM NaCl, pH8.0, containing 0.01% SKL, 5% Trehalose.

Original Concentration: 100µg/mL

Applications: Positive Control; Immunogen; SDS-PAGE; WB.

(May be suitable for use in other assays to be determined by the end user.)

Predicted isoelectric point: 5.0

Predicted Molecular Mass: 54.7kDa

Accurate Molecular Mass: 55kDa as determined by SDS-PAGE reducing conditions.

[USAGE]

Reconstitute in ddH₂O to a concentration of 0.1-1.0 mg/mL. Do not vortex.

[STORAGE AND STABILITY]

Storage: Avoid repeated freeze/thaw cycles.

Store at 2-8°C for one month.

Aliquot and store at -80°C for 12 months.

Stability Test: The thermal stability is described by the loss rate. The loss rate was determined by accelerated thermal degradation test, that is, incubate the protein at 37°C for 48h, and no obvious degradation and precipitation were observed. The loss rate is less than 5% within the expiration date under appropriate storage condition.

[SEQUENCE]

```

MNNFGNEEFD CHFLDEGFTA KDILDQKINE VSSDDKDAF YVADLGDILK
KHLRWLKALP RVTPFYAVKC NDSKAIVKTL AATGTGFDCA SKTEIQLVQS
LGVPPERIIY ANPCKQVSQI KYAANNGVQM MTFDSEVELM KVARAHPKAK
LVLRIATDDS KAVCRLSVKF GATLRTSRL LERAKELNID VVGVSFHVGS
GCTDPETFVQ AISDARCVFD MGAEVGFSMY LLDIGGGFPG SEDVCLKFEE
ITGVINPALD KYFPSDSGVR IIAEPGRYV ASAFTLAVNI IAKKIVLKEQ
TGSDDEDESS EQTFMYVND GUYGSFNCIL YDHAHVKPLL QKRPKPDEKY
YSSSIWGPTC DGLDRIVERC DLPEMHVGDW MLFENMGAYT VAAASTFNGF
QRPTIYYVMS GPAWQLMQQF QNPDPPEVE EQDASTLPVS CAWESGMKRH
RAACASASIN V

```

[IDENTIFICATION]

GAATTCATGAACAACTTTGGTAATGAAAGAGTTTGACTGCCACTTCTCTGATGAAGGTTTACTGCCAAGGACATCTGGACCAAAAAATTAATGAAGTTTCTTCTCTGATGATAAGGATGCCTTCTATGTGGCAGACCTGGAGACATTCTAAAGAAACATCTGAGGTGGTTAAAAAGCTC

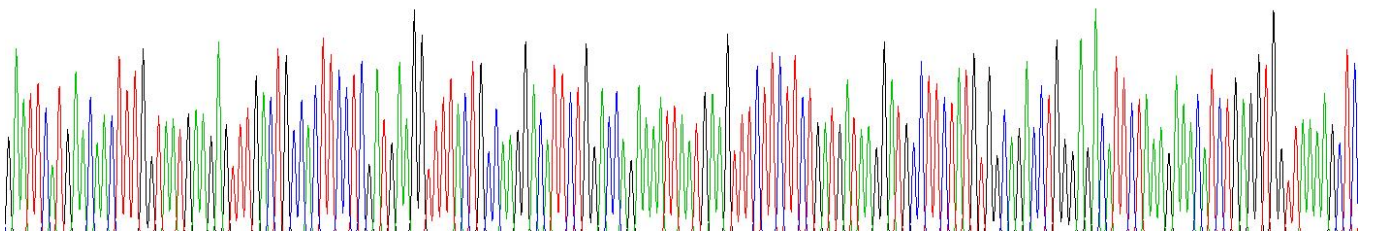


Figure . Gene Sequencing (extract)

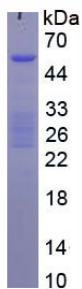


Figure. SDS-PAGE

[IMPORTANT NOTE]

The kit is designed for research use only, we will not be responsible for any issue if the kit was used in clinical diagnostic or any other procedures.