

RPB317Mu02 50µg

Recombinant Perforin 1 (PRF1)

Organism Species: *Mus musculus* (Mouse)

Instruction manual

FOR RESEARCH USE ONLY

NOT FOR USE IN CLINICAL DIAGNOSTIC PROCEDURES

13th Edition (Revised in Aug, 2023)

[PROPERTIES]

Source: Prokaryotic expression

Host: *E.coli*

Residues: Val40~Lys355

Tags: N-terminal His Tag

Subcellular Location: Membrane, Secreted, Cytoplasm, Endoplasmic reticulum lumen

Purity: > 90%

Traits: Freeze-dried powder

Buffer formulation: PBS, pH7.4, containing 0.01% SKL, 5% Trehalose .

Original Concentration: 3500µg/mL

Applications: Positive Control; Immunogen; SDS-PAGE; WB.

(May be suitable for use in other assays to be determined by the end user.)

Predicted isoelectric point: 8.3

Predicted Molecular Mass: 39.0kDa

Accurate Molecular Mass: 42kDa as determined by SDS-PAGE reducing conditions.

[USAGE]

Reconstitute in 10mM PBS (pH7.4) to a concentration of 0.1-1.0 mg/mL. Do not vortex.

[STORAGE AND STABILITY]

Storage: Avoid repeated freeze/thaw cycles.

Store at 2-8°C for one month.

Aliquot and store at -80°C for 12 months.

Stability Test: The thermal stability is described by the loss rate. The loss rate was determined by accelerated thermal degradation test, that is, incubate the protein at 37°C for 48h, and no obvious degradation and precipitation were observed. The loss rate is less than 5% within the expiration date under appropriate storage condition.

[SEQUENCE]

V WMAGEGMDVT

TLRRSGSFPV NTQRFLRPDR TCTLCKNSLM RDATQRLPVA ITHWRPHSSH
 CQRNVAAAKV HSTEGVAREA AANINNDWRV GLDVNPRPEA NMRASVAGSH
 SKVANFAAEK TYQDQYNFNS DTVECRMYSF RLVQKPPLHL DFKKALRALP
 RNFNSSTEHA YHRLISSYGT HFITAVDLGG RISVLTALRT CQLTLNGLTA
 DEVGDCLNVE AQVSIQAQAS VSSEYKACEE KKKQHQMATS FHQTYRERHV
 EVLGGPLDST HDLLFGNQAT PEQFSTWTAS LPSNPGLVDY SLEPLHTLLE
 EQNPK

[IDENTIFICATION]

GGTAGGTGTGGCCGGGAGGCCTGCAATATGAAATAGACCTGGCCCTGTGAGGCCTGGATTGTAACCTGAGGCGGAGCCAACTGGCCGCTGGCTGAGCTGGCCCTGGCAATTTTGGAGCTGGAGGGACCTATCGGACCGAGTCAACCTTTAATAGCGAGCAAGTAAGAGTGTCAGATGTGAGCTTTTGGCCCTGGTA

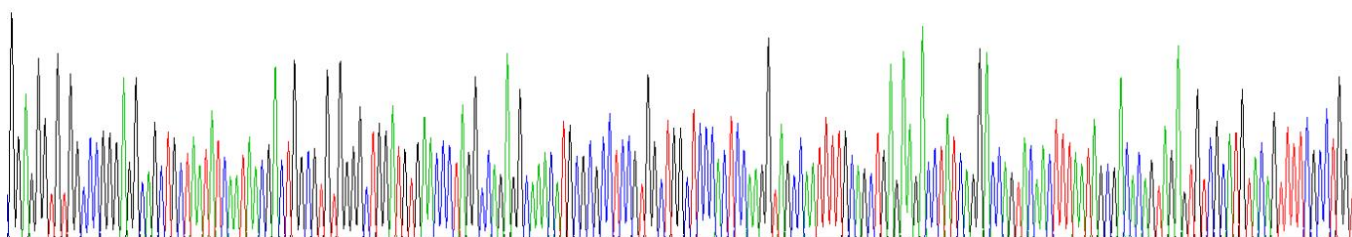


Figure . Gene Sequencing (extract)

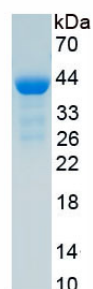


Figure. SDS-PAGE

[IMPORTANT NOTE]

The kit is designed for research use only, we will not be responsible for any issue if the kit was used in clinical diagnostic or any other procedures.