

RPF752Hu01 100µg

Recombinant Peripherin (PRPH)

Organism Species: *Homo sapiens (Human)*

Instruction manual

FOR RESEARCH USE ONLY

NOT FOR USE IN CLINICAL DIAGNOSTIC PROCEDURES

12th Edition (Revised in Aug, 2016)

[PROPERTIES]

Source: Prokaryotic expression

Host: *E.coli*

Residues: Met1~Tyr470

Tags: N-terminal His Tag

Subcellular Location: Cytoplasm

Purity: > 90%

Traits: Freeze-dried powder

Buffer formulation: 20mM Tris, 150mM NaCl, pH8.0, containing 0.01% SKL, 5% Trehalose.

Original Concentration: 400µg/mL

Applications: Positive Control; Immunogen; SDS-PAGE; WB.

(May be suitable for use in other assays to be determined by the end user.)

Predicted isoelectric point: 5.1

Predicted Molecular Mass: 57.4kDa

Accurate Molecular Mass: 58kDa as determined by SDS-PAGE reducing conditions.

[USAGE]

Reconstitute in 20mM Tris, 150mM NaCl (pH8.0) to a concentration of 0.1-1.0 mg/mL. Do not vortex.

[STORAGE AND STABILITY]

Storage: Avoid repeated freeze/thaw cycles.

Store at 2-8°C for one month.

Aliquot and store at -80°C for 12 months.

Stability Test: The thermal stability is described by the loss rate. The loss rate was determined by accelerated thermal degradation test, that is, incubate the protein at 37°C for 48h, and no obvious degradation and precipitation were observed. The loss rate is less than 5% within the expiration date under appropriate storage condition.

[SEQUENCE]

```

MSHHPSGLRA  GFSSTSYRRT  FGPPPSLSPG  AFSYSSSSRF  SSSRLLGSAS
PSSSVRLGSF  RSPRAGAGAL  LRLPSERLDF  SMAEALNQEF  LATRSNEKQE
LQELNDRFAN  FIEKVRFLEQ  QNAALRGELS  QARGQEPARA  DQLCQQELRE
LRRELELLGR  ERDRVQVERD  GLAEDLAALK  QRLEEETRKR  EDAEHNLVLF
RKDVDDATLS  RLELERKIES  LMDEIEFLKK  LHEEELRDLQ  VSVESQQVQQ
VEVEATVKPE  LTAALRDIRA  QYESIAAKNL  QEAEWYKSK  YADLSDAANR
NHEALRQAKQ  EMNESRRQIQ  SLTCEVDGLR  GTNEALLRQL  RELEEQFALE
AGGYQAGAAR  LEEELRQLKE  EMARHLREYQ  ELLNVKMALD  IEIATYRKLK
EGEESRISVP  VHSFASLNIK  TTVPEVEPPQ  DSHSRKTVLI  KTIETRNGEV
VTESQKEQRS  ELDKSSAHSY
    
```

[IDENTIFICATION]

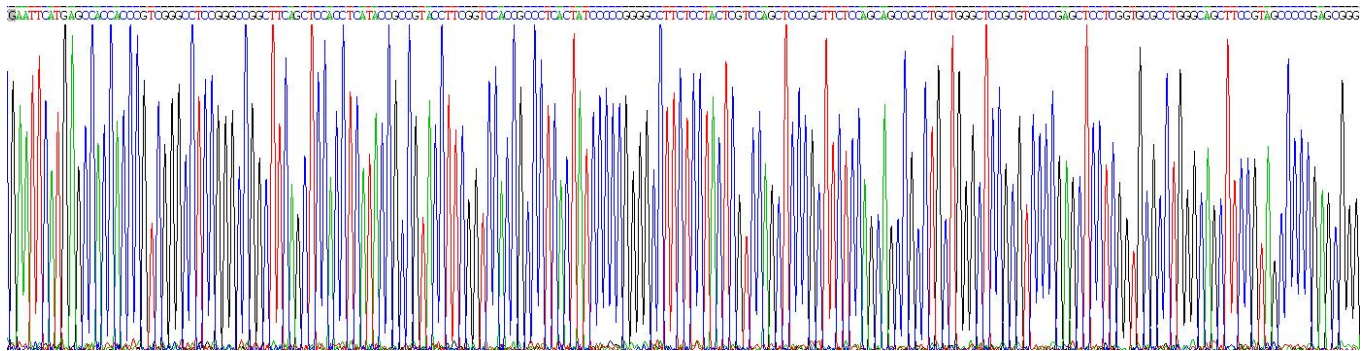


Figure . Gene Sequencing (extract)

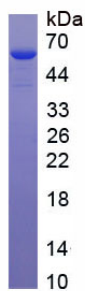


Figure. SDS-PAGE

[IMPORTANT NOTE]

The kit is designed for research use only, we will not be responsible for any issue if the kit was used in clinical diagnostic or any other procedures.