

**RPK173Hu01 50µg**

**Recombinant Pescadillo Homolog 1 (PES1)**

**Organism Species: *Homo sapiens (Human)***

***Instruction manual***

FOR RESEARCH USE ONLY

NOT FOR USE IN CLINICAL DIAGNOSTIC PROCEDURES

---

12th Edition (Revised in Aug, 2016)

**[ PROPERTIES ]**

**Source:** Prokaryotic expression

**Host:** *E.coli*

**Residues:** Met1~Ser415

**Tags:** N-terminal His Tag

**Subcellular Location:** Nucleus, Chromosome

**Purity:** > 95%

**Traits:** Freeze-dried powder

**Buffer formulation:** 20mM Tris, 150mM NaCl, pH8.0, containing 0.01% SKL, 5% Trehalose.

**Original Concentration:** 200µg/mL

**Applications:** Positive Control; Immunogen; SDS-PAGE; WB.

(May be suitable for use in other assays to be determined by the end user.)

**Predicted isoelectric point:** 9.2

**Predicted Molecular Mass:** 51.8kDa

**Accurate Molecular Mass:** 52kDa as determined by SDS-PAGE reducing conditions.

**[ USAGE ]**

Reconstitute in 20mM Tris, 150mM NaCl (pH8.0) to a concentration of 0.1-1.0 mg/mL. Do not vortex.

**[ STORAGE AND STABILITY ]**

**Storage:** Avoid repeated freeze/thaw cycles.

Store at 2-8°C for one month.

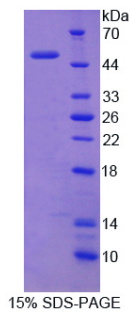
Aliquot and store at -80°C for 12 months.

**Stability Test:** The thermal stability is described by the loss rate. The loss rate was determined by accelerated thermal degradation test, that is, incubate the protein at 37°C for 48h, and no obvious degradation and precipitation were observed. The loss rate is less than 5% within the expiration date under appropriate storage condition.

**[ SEQUENCE ]**

MGGLEKKKYE RGSATNYITR NKARKKLQLS LADFRRLCIL KGIYPHEPKH  
KKKVNKGSTA ARTFYLIKDI RFLLEPIVN KFREYKVFVR KLRKAYGKSE  
WNTVERLKDN KPNYKLDHII KERYPTFIDA LRDLDALSM CFLFSTFPRT  
GKCHVQTIQL CRRLTVEFMH YIIAARALRK VFLSIKGIYY QAEVLGQPIV  
WITPYAFSHD HPTDVDYRVM ATFTEFYTTL LGFVNFRLYQ LLNLHYPPKL  
EGQAQAEAKA GEGTYALDSE SCMEKLAALS ASLARVVVPA TEEEAEVDEF  
PTDGEMSAQE EDRRKELEAQ EKHKKLFEGL KFFLNREVPR EALAFIIRSF  
GGEVSWDKSL CIGATYDVTD SRITHQIVDR PGQQTSVIGR CYVQPQWVFD  
SVNARLLLPV AEYFS

**[ IDENTIFICATION ]**



**[ IMPORTANT NOTE ]**

The kit is designed for research use only, we will not be responsible for any issue if the kit was used in clinical diagnostic or any other procedures.