

RPP807Hu02 10µg

Recombinant Poly ADP Ribose Glycohydrolase (PARG)

Organism Species: *Homo sapiens (Human)*

Instruction manual

FOR RESEARCH USE ONLY

NOT FOR USE IN CLINICAL DIAGNOSTIC PROCEDURES

13th Edition (Revised in Aug, 2023)

[PROPERTIES]

Source: Prokaryotic expression

Host: *E.coli*

Residues: Met1~Thr976

Tags: N-terminal His Tag

Subcellular Location: Secreted

Purity: > 97%

Traits: Freeze-dried powder

Buffer formulation: PBS, pH7.4, containing 0.01% Sarcosyl, 5% Trehalose.

Original Concentration: 80µg/mL

Applications: Positive Control; Immunogen; SDS-PAGE; WB.

(May be suitable for use in other assays to be determined by the end user.)

Predicted isoelectric point: 6.4

Predicted Molecular Mass: 114.8kDa

Accurate Molecular Mass: 115kDa as determined by SDS-PAGE reducing conditions.

[USAGE]

Reconstitute in ddH₂O to a concentration of 0.1-0.5 mg/mL. Do not vortex.

[STORAGE AND STABILITY]

Storage: Avoid repeated freeze/thaw cycles.

Store at 2-8°C for one month.

Aliquot and store at -80°C for 12 months.

Stability Test: The thermal stability is described by the loss rate. The loss rate was determined by accelerated thermal degradation test, that is, incubate the protein at 37°C for 48h, and no obvious degradation and precipitation were observed. The loss rate is less than 5% within the expiration date under appropriate storage condition.

[SEQUENCE]

```

MNAGPGCEPC TKRPRWGAAT TSPAASDARS FPSRQRRVLD PKDAHVQFRV
PPSSPACVPG RAGQHRGSAT SLVFKQKTIT SWMDTKGIKT AEESLDSKE
NNNTRIESMM SSVQKDNFYQ HNVEKLENVS QLSLDKSPTE KSTQYLNQHQ
TAAMCKWQNE GKHTEQLLES EPQTVTLVPE QFSNANIDRS PQNDHSDTD
SEENRDNQF LTTVKLANAK QTTEDEQARE AKSHQKCSKS CDPGEDCASC
QQDEIDVVPE SPLSDVGSED VGTGPKNDNK LTRQESCLGN SPPFEKESEP
ESPMVDVNSK NSCQDSEADE ETSPGFDEQE DGSSSQTANK PSRFQARDAD
IEFRKRYSTK GGEVRLHFQF EGGESRTGMN DLNAKLPGNI SSLNVECRNS
KQHGKKDSKI TDHFMRLPKA EDRRKEQWET KHQRTERKIP KYVPPHLSPD
KKWLGTPIEE MRRMPRCGIR LPLLRPANH TVTIRVDLLR AGEVPPFPPT
HYKDLWDNKH VKMPCSEQNL YPVEDENGER TAGSRWELIQ TALLNKFTRP
QNLKDAILKY NVAYSKKWDF TALIDFWDKV LEEAEAQHLV QSILPDMVKI
ALCLPNICTQ PIPLLKQKMN HSITMSQEQI ASLLANAFEC TFPRRNAKMK
SEYSSYPDIN FNRLFEGRSS RKPEKLKTLF CYFRRVTEKK PTGLVTFTRQ
SLEDPEWER CEKPLTRLHV TYEGTIEENG QGMLQVDFAN RFVGGGVTSV
GLVQEEIRFL INPELIISRL FTEVLHDNEC LIITGTEQYS EYTGAEYR
WSRSHEDGSE RDDWQRRCTE IVAIDALHFR RYLDQFVPEK MRRELNKAYC
GFLRPGVSSE NLSAVATGNW GCGAFGGDAR LKALIQILAA AAAERDVVYF
TFGDSSELMRD IYSMHIFLTE RKLTVDGVYK LLLRYYNEEC RNCSTPGPDI
KLYPFIYHAV ESCAETADHS GQRTGT
  
```

[IDENTIFICATION]

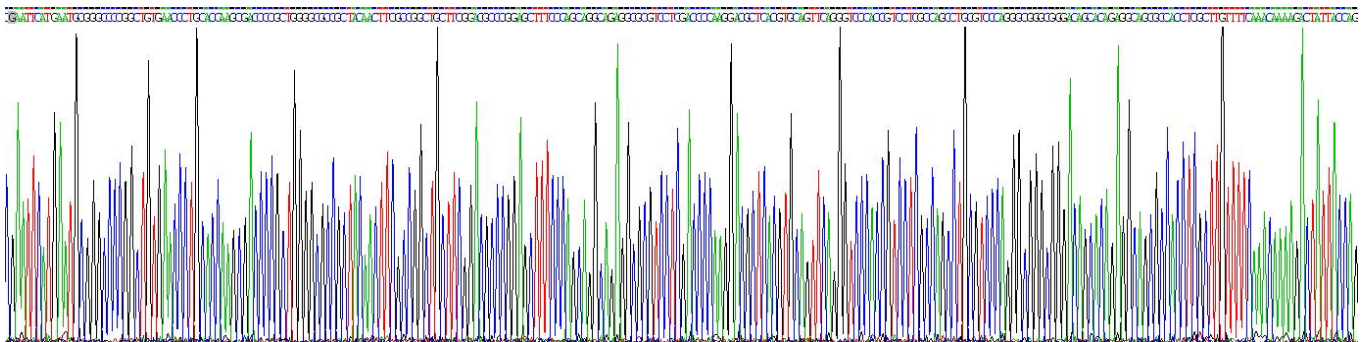


Figure . Gene Sequencing (extract)

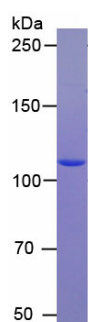


Figure. SDS-PAGE

[IMPORTANT NOTE]

The kit is designed for research use only, we will not be responsible for any issue if the kit was used in clinical diagnostic or any other procedures.