

**RPB316Mu01 50µg**  
**Recombinant Procollagen C-Endopeptidase Enhancer (PCOLCE)**  
**Organism Species: *Mus musculus* (Mouse)**  
***Instruction manual***

FOR RESEARCH USE ONLY  
NOT FOR USE IN CLINICAL DIAGNOSTIC PROCEDURES

---

12th Edition (Revised in Aug, 2016)

**[ PROPERTIES ]**

**Source:** Prokaryotic expression

**Host:** *E.coli*

**Residues:** Cys36~Ala468

**Tags:** N-terminal His Tag

**Subcellular Location:** Secreted

**Purity:** > 97%

**Traits:** Freeze-dried powder

**Buffer formulation:** 100mMNaHCO<sub>3</sub>, 500mMNaCl, pH8.3, containing 0.01% SKL, 5% Trehalose.

**Original Concentration:** 80µg/mL

**Applications:** Positive Control; Immunogen; SDS-PAGE; WB.

(May be suitable for use in other assays to be determined by the end user.)

**Predicted isoelectric point:** 8.4

**Predicted Molecular Mass:** 47.8kDa

**Accurate Molecular Mass:** 48kDa as determined by SDS-PAGE reducing conditions.

**[ USAGE ]**

Reconstitute in ddH<sub>2</sub>O to a concentration of 0.1-0.5 mg/mL. Do not vortex.

**[ STORAGE AND STABILITY ]**

**Storage:** Avoid repeated freeze/thaw cycles.

Store at 2-8°C for one month.

Aliquot and store at -80°C for 12 months.

**Stability Test:** The thermal stability is described by the loss rate. The loss rate was determined by accelerated thermal degradation test, that is, incubate the protein at 37°C for 48h, and no obvious degradation and precipitation were observed. The loss rate is less than 5% within the expiration date under appropriate storage condition.

**[ SEQUENCE ]**

			CGGDV	TGESGYVASE
GFPNLYPPNK	KCIWTITVPE	GQTVSLSFRV	FMELHPSCR	YDALEVFAGS
GTSGQRLGRF	CGTFRPAPVV	APGNQVTLRM	TTDEGTGGRG	FLLWYSGRAT
SGTEHQFCGG	RMEKAQGTLT	TPNWPESDYP	PGISCSWHII	APSNQVIMLT
FGKFDVEPDT	YCRYDSVSVF	NGAVSDDSKR	LGKFCGDKAP	SPISSEGNEL
LVQFVSDLSV	TADGFSASYR	TLPRDAVEKE	SALSPGEDVQ	RGPQSRSDPK
TGTGPKVKPP	TKPKSQPAET	PEASPATQAT	PVAPAAPSIT	CPKQYKRSGT
LQSNFCSSSL	VVTGTVKTMV	RGPGEGLTVT	VSLLGVYKTG	GLDLPSPPSG
TSLKLYVPCR	QMPPMKKGAS	YLLMGQVEEN	RGPILPPESF	VVLYRSNQDQ
ILNNLSKRKC	PSQPRTAA			

**[ IDENTIFICATION ]**

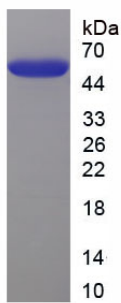


Figure. SDS-PAGE

**[ IMPORTANT NOTE ]**

The kit is designed for research use only, we will not be responsible for any issue if the kit was used in clinical diagnostic or any other procedures.