

**RPA151Mu01 5mg**

**Recombinant Prostate Specific Antigen (PSA)**

**Organism Species: *Mus musculus* (Mouse)**

***Instruction manual***

**FOR RESEARCH USE ONLY**

**NOT FOR USE IN CLINICAL DIAGNOSTIC PROCEDURES**

---

13th Edition (Revised in Aug, 2023)

## **[ PROPERTIES ]**

**Source:** Prokaryotic expression

**Host:** *E.coli*

**Residues:** His39~Pro261

**Tags:** N-terminal His Tag

**Subcellular Location:** Secreted

**Purity:** > 80%

**Traits:** Freeze-dried powder

**Buffer formulation:** PBS, pH7.4, containing 0.01% SKL, 5% Trehalose.

**Original Concentration:** 1500µg/mL

**Applications:** Positive Control; Immunogen; SDS-PAGE; WB.

(May be suitable for use in other assays to be determined by the end user.)

**Predicted isoelectric point:** 6.3

**Predicted Molecular Mass:** 26.1kDa

**Accurate Molecular Mass:** 27kDa as determined by SDS-PAGE reducing conditions.

## **[ USAGE ]**

Reconstitute in 10mM PBS (pH7.4) to a concentration of 0.1-1.0 mg/mL. Do not vortex.

## **[ STORAGE AND STABILITY ]**

**Storage:** Avoid repeated freeze/thaw cycles.

Store at 2-8°C for one month.

Aliquot and store at -80°C for 12 months.

**Stability Test:** The thermal stability is described by the loss rate. The loss rate was determined by accelerated thermal degradation test, that is, incubate the protein at 37°C for 48h, and no obvious degradation and precipitation were observed. The loss rate is less than 5% within the expiration date under appropriate storage condition.

## **[ SEQUENCE ]**

```

                                HV AVYRYTQYLC
GGVLLDPNWV LTAAHCYDDN YKVWLGKNNL FKDEPSAQR FVSKAIPHPG
FNMSLMRKHI RFLEYDYSND LMLLRLSKPA DITDTVKPIT LPTEEPKLGS
TCLASGWGSI TPTKFQFTDD LYCVNLKLLP NEDCAKAHIE KVTDAMLCAG
EMDGGKDTCK GDSGGPLICD GVLQGITSWG HTPCGEPDMP GVYTKLNKFT
SWIKDTMAKN P
  
```

## [ IDENTIFICATION ]

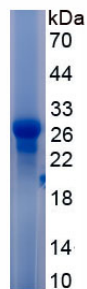


Figure. SDS-PAGE

## [ IMPORTANT NOTE ]

The kit is designed for research use only, we will not be responsible for any issue if the kit was used in clinical diagnostic or any other procedures.