

**RPH307Hu02 100µg**

**Recombinant Protamine 2 (PRM2)**

**Organism Species: *Homo sapiens* (Human)**

***Instruction manual***

FOR RESEARCH USE ONLY

NOT FOR USE IN CLINICAL DIAGNOSTIC PROCEDURES

---

12th Edition (Revised in Aug, 2016)

**[ PROPERTIES ]**

**Source:** Prokaryotic expression

**Host:** *E.coli*

**Residues:** Val2~Arg100

**Tags:** N-terminal His Tag

**Subcellular Location:** Nucleus, Chromosome

**Purity:** > 90%

**Traits:** Freeze-dried powder

**Buffer formulation:** 20mM Tris, 150mM NaCl, pH8.0, containing 0.01% SKL, 5% Trehalose.

**Original Concentration:** 200µg/mL

**Applications:** Positive Control; Immunogen; SDS-PAGE; WB.

(May be suitable for use in other assays to be determined by the end user.)

**Predicted isoelectric point:** 12.4

**Predicted Molecular Mass:** 16.3kDa

**Accurate Molecular Mass:** 17kDa as determined by SDS-PAGE reducing conditions.

**[ USAGE ]**

Reconstitute in 20mM Tris, 150mM NaCl (pH8.0) to a concentration of 0.1-1.0 mg/mL. Do not vortex.

**[ STORAGE AND STABILITY ]**

**Storage:** Avoid repeated freeze/thaw cycles.

Store at 2-8°C for one month.

Aliquot and store at -80°C for 12 months.

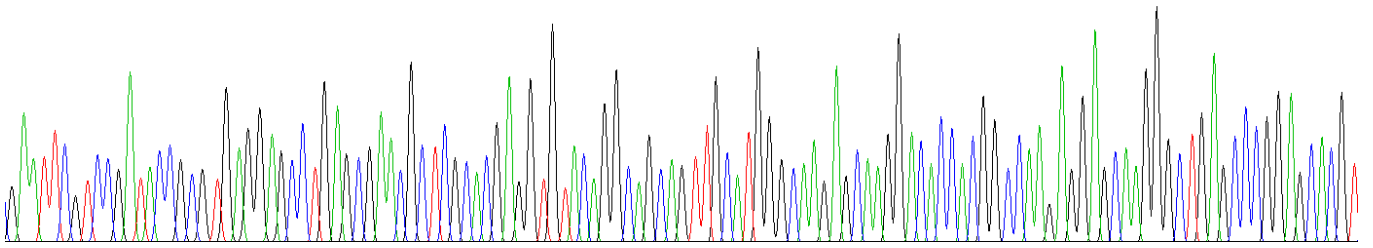
**Stability Test:** The thermal stability is described by the loss rate. The loss rate was determined by accelerated thermal degradation test, that is, incubate the protein at 37°C for 48h, and no obvious degradation and precipitation were observed. The loss rate is less than 5% within the expiration date under appropriate storage condition.

**[ SEQUENCE ]**

VRVYRVSLS ERSHEVYRQQ LHGQEQGHHG QEEQGLSPEH VEVYERTHGQ  
 SHYRRRHCSR RRLHRIHRRQ HRSCRRRKRR SCRHHRRHRR GCRTRKRTCR

**[ IDENTIFICATION ]**

G A A T T C G T C C G A T A C C G C G T G A G G A G C C T G A G C G A A C G C T C G C A C G A G G T G T A C A G G C A G C A G T T G C A T G G G C A A G A G C A A G G A C A C C A C G G C C A A G A G G A G C A A G G G C T G A G C C C G G A G C A C G T



**Figure . Gene Sequencing (extract)**

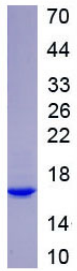


Figure. SDS-PAGE

**[ IMPORTANT NOTE ]**

The kit is designed for research use only, we will not be responsible for any issue if the kit was used in clinical diagnostic or any other procedures.