

RPG277Hu01 100µg

Recombinant Proteasome 26S Subunit, ATPase 2 (PSMC2)

Organism Species: *Homo sapiens* (Human)

Instruction manual

FOR RESEARCH USE ONLY

NOT FOR USE IN CLINICAL DIAGNOSTIC PROCEDURES

12th Edition (Revised in Aug, 2016)

[PROPERTIES]

Source: Prokaryotic expression

Host: *E.coli*

Residues: Met1~Asn433

Tags: N-terminal His Tag

Subcellular Location: Cytoplasm

Purity: > 97%

Traits: Freeze-dried powder

Buffer formulation: PBS, pH7.4, containing 0.01% SKL, 5% Trehalose.

Original Concentration: 200µg/mL

Applications: Positive Control; Immunogen; SDS-PAGE; WB.

(May be suitable for use in other assays to be determined by the end user.)

Predicted isoelectric point: 6.3

Predicted Molecular Mass: 52.3kDa

Accurate Molecular Mass: 52kDa as determined by SDS-PAGE reducing conditions.

[USAGE]

Reconstitute in 10mM PBS (pH7.4) to a concentration of 0.1-1.0 mg/mL. Do not vortex.

[STORAGE AND STABILITY]

Storage: Avoid repeated freeze/thaw cycles.

Store at 2-8°C for one month.

Aliquot and store at -80°C for 12 months.

Stability Test: The thermal stability is described by the loss rate. The loss rate was determined by accelerated thermal degradation test, that is, incubate the protein at 37°C for 48h, and no obvious degradation and precipitation were observed. The loss rate is less than 5% within the expiration date under appropriate storage condition.

[SEQUENCE]

MPDYLGADQR KTKEDKDDK PIRALDEGDI ALLKTYGQST YSRQIKQVED
DIQQLLKKIN ELTGIKESDT GLAPPALWDL AADKQTLQSE QPLQVARCTK
IINADSEDPK YIINVKQFAK FVVDLSDQVA PTDIEEGMRV GVDRNKYQIH
IPLPPKIDPT VTMMQVEEKP DVTYSVGGC KEQIEKLREV VETPLLHPER
FVNLGIEPPK GVLLFGPPGT GKTLCARAVA NRTDACFIRV IGSELVQKYV
GEGARMVREL FEMARTKKAC LIFFDEIDAI GGARFDDGAG GDNEVQRTML
ELINQLDGFV PRGNIKVLMA TNRPDLDPA LMRPGRDRK IEFSLPDLEG
RTHIFKIHAR SMSVERDIRF ELLARLCPNS TGAEIRSVCT EAGMFAIRAR
RKIATEKDFL EAVNKVIKSY AKFSATPRYM TYN

[IDENTIFICATION]

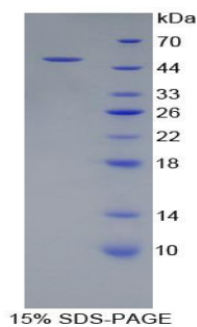


Figure. SDS-PAGE

[IMPORTANT NOTE]

The kit is designed for research use only, we will not be responsible for any issue if the kit was used in clinical diagnostic or any other procedures.