

**RPD776Hu01 100 µg**

**Recombinant Protein Disulfide Isomerase A6 (PDIA6)**

**Organism Species: *Homo sapiens (Human)***

***Instruction manual***

FOR RESEARCH USE ONLY

NOT FOR USE IN CLINICAL DIAGNOSTIC PROCEDURES

---

13th Edition (Revised in Aug, 2023)

**[ PROPERTIES ]**

**Source:** Prokaryotic expression

**Host:** *E.coli*

**Residues:** Leu20~Leu440

**Tags:** N-terminal His Tag

**Subcellular Location:** Endoplasmic reticulum lumen

**Purity:** > 97%

**Traits:** Freeze-dried powder

**Buffer formulation:** PBS, pH7.4, containing 0.01% SKL, 5% Trehalose

**Original Concentration:** 200µg/mL

**Applications:** Positive Control; Immunogen; SDS-PAGE; WB.

(May be suitable for use in other assays to be determined by the end user.)

**Predicted isoelectric point:** 4.95

**Predicted Molecular Mass:** 49.9kDa

**Accurate Molecular Mass:** 50kDa as determined by SDS-PAGE reducing conditions.

**[ USAGE ]**

Reconstitute in 10mM PBS (pH7.4) to a concentration of 0.1-1.0 mg/mL. Do not vortex.

**[ STORAGE AND STABILITY ]**

**Storage:** Avoid repeated freeze/thaw cycles.

Store at 2-8°C for one month.

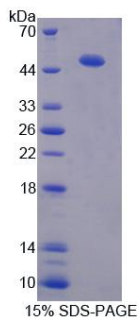
Aliquot and store at -80°C for 12 months.

**Stability Test:** The thermal stability is described by the loss rate. The loss rate was determined by accelerated thermal degradation test, that is, incubate the protein at 37°C for 48h, and no obvious degradation and precipitation were observed. The loss rate is less than 5% within the expiration date under appropriate storage condition.

**[ SEQUENCE ]**

L YSSSDDVIEL TPSNFNREVI QSDSLWLVEF  
YAPWCGHCQR LTP EWKKAAT ALKD VVKVGA VDADKHSLG GQYGVQGFPT  
IKIFGSNKNR PEDYQGGRTG EAI VDAALSA LRQLVKDRLG GRSGGYSSGK  
QGRSDSSSKK DVIELTDDSF DKNVLDSEDV WMVEFYAPWC GHCKNLEPEW  
AAAASEVKEQ TKGKVKLA AV DATVNQVLAS RYGIRGFPTI KIFQKGESPV  
DYDGGRTSD IVSRALDLFS DNAPPPELLE IINEDIAKRT CEEHQLCVVA  
VLP HILDTGA AGRNSYLEVL LKLADKYKKK MWGWLWTEAG AQSELETALG  
IGGFGYPAMA AINARKMKFA LLKGSFSEQG INEFLRELSF GRGSTAPVGG  
GAFFTIVERE PWDGRDGELP VEDDIDLSDV ELDDLKDEL

**[ IDENTIFICATION ]**



**[ IMPORTANT NOTE ]**

The kit is designed for research use only, we will not be responsible for any issue if the kit was used in clinical diagnostic or any other procedures.