

RPE019Ra01 1

Recombinant Protein Phosphatase 4, Regulatory Subunit 1 (PPP4R1)

Organism Species: *Rattus norvegicus* (Rat)

Instruction manual

FOR RESEARCH USE ONLY

NOT FOR USE IN CLINICAL DIAGNOSTIC PROCEDURES

13th Edition (Revised in Aug, 2023)

[**PROPERTIES**]

Source: Prokaryotic expression

Host: *E.coli*

Residues: Asp639~Tyr951

Tags: N-terminal His and GST Tag

Subcellular Location: Secreted

Purity: > 90%

Traits: Freeze-dried powder

Buffer formulation: PBS, pH7.4, containing 0.01% SKL, 5% Trehalose.

Original Concentration: 100µg

Applications: Positive Control; Immunogen; SDS-PAGE; WB.

(May be suitable for use in other assays to be determined by the end user.)

Predicted isoelectric point: 6.0

Predicted Molecular Mass: 66.1kDa

Accurate Molecular Mass: 66kDa as determined by SDS-PAGE reducing conditions.

[**USAGE**]

Reconstitute in 10mM PBS (pH7.4) to a concentration of 0.1-1.0 mg/mL. Do not vortex.

[**STORAGE AND STABILITY**]

Storage: Avoid repeated freeze/thaw cycles.

Store at 2-8°C for one month.

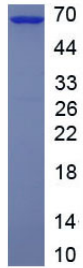
Aliquot and store at -80°C for 12 months.

Stability Test: The thermal stability is described by the loss rate. The loss rate was determined by accelerated thermal degradation test, that is, incubate the protein at 37°C for 48h, and no obvious degradation and precipitation were observed. The loss rate is less than 5% within the expiration date under appropriate storage condition.

[**SEQUENCE**]

```
DT EIAKHCAYSL PCVALTLCGRQ NWHCLRETYE TLASDMQWKV RRTLAFSIHE LAVILGDQLT AADLVPIFNG FLEDLDEVRI CVLKHLHDFL KLLHIDKRRE YLYQLQEFVL TDNSRNWRFR  
AELAEQLILL LELYSRVDY DYLRPIALNL CADKVVSRW ISYKLVSEMV KKLHMTPTPT FGVELINELV ENFCRCPKWS GRQAFVFCQ TVIEDDCLPM DQFAVHLMFH LLTLANDRVP NVRVLLAKTL  
RQTLLKEEYF LASASCHQEA VEQTIMALQM DRSDVKYFA SIHPSSTKLS EDAMSTASST Y-
```

[IDENTIFICATION]



[IMPORTANT NOTE]

The kit is designed for research use only, we will not be responsible for any issue if the kit was used in clinical diagnostic or any other procedures.