

**RPG246Mu01 1mg**

**Recombinant Proteoglycan 4 (PRG4)**

**Organism Species: *Mus musculus* (Mouse)**

***Instruction manual***

FOR RESEARCH USE ONLY

NOT FOR USE IN CLINICAL DIAGNOSTIC PROCEDURES

---

13th Edition (Revised in Aug, 2023)

## **[ PROPERTIES ]**

**Source:** Prokaryotic expression

**Host:** *E.coli*

**Residues:** Gly797~Pro1054

**Tags:** N-terminal His and GST Tag

**Subcellular Location:** Secreted

**Purity:** > 80%

**Traits:** Freeze-dried powder

**Buffer formulation:** PBS, pH7.4, containing 0.01% SKL, 5% Trehalose.

**Original Concentration:** 500µg/mL

**Applications:** Positive Control; Immunogen; SDS-PAGE; WB.

(May be suitable for use in other assays to be determined by the end user.)

**Predicted isoelectric point:** 10.0

**Predicted Molecular Mass:** 60.0kDa

**Accurate Molecular Mass:** 60&55&50kDa as determined by SDS-PAGE reducing conditions.

## **[ USAGE ]**

Reconstitute in 10mM PBS (pH7.4) to a concentration of 0.1-1.0 mg/mL. Do not vortex.

## **[ STORAGE AND STABILITY ]**

**Storage:** Avoid repeated freeze/thaw cycles.

Store at 2-8°C for one month.

Aliquot and store at -80°C for 12 months.

**Stability Test:** The thermal stability is described by the loss rate. The loss rate was determined by accelerated thermal degradation test, that is, incubate the protein at 37°C for 48h, and no obvious degradation and precipitation were observed. The loss rate is less than 5% within the expiration date under appropriate storage condition.

## **[ SEQUENCE ]**

GKPV DGLTTLRNGT LVAFRGHYFW MLNPFRRPPSP PRRITEVWGI PSPIDTVFTR  
CNCEGKTFFF KDSQYWRFTN DVVDPGYPKQ IVKGFGGLTG KIVAALSIK YKDRPESVYF  
FKRGGNIQQY TYKQEPMKKC TGRRPAINYS VYGEEAQVRR RRFERAVGPF QTHTFRIHYS  
VPMRVSYQDK GFLHNEVKVS TMWRGFPNVV TSAITLPNIR KPDGYDYYAF SKDQYYNIDV  
PTRTARAITT RSGQTLSKIW YNCP

## [ IDENTIFICATION ]

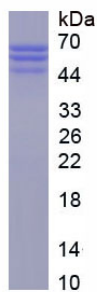


Figure. SDS-PAGE

## [ IMPORTANT NOTE ]

The kit is designed for research use only, we will not be responsible for any issue if the kit was used in clinical diagnostic or any other procedures.