

**RPH217Hu01 50µg**  
**Recombinant Replication Protein A1 (RPA1)**  
**Organism Species: *Homo sapiens (Human)***  
***Instruction manual***

FOR RESEARCH USE ONLY  
NOT FOR USE IN CLINICAL DIAGNOSTIC PROCEDURES

---

12th Edition (Revised in Aug, 2016)

**[ PROPERTIES ]**

**Source:** Prokaryotic expression

**Host:** *E.coli*

**Residues:** Asp18~Pro403

**Tags:** N-terminal His and GST Tag

**Subcellular Location:** Nucleus

**Purity:** > 95%

**Traits:** Freeze-dried powder

**Buffer formulation:** 20mM Tris, 150mM NaCl, pH8.0, containing 0.01% SKL, 5% Trehalose.

**Original Concentration:** 50µg/mL

**Applications:** Positive Control; Immunogen; SDS-PAGE; WB.

(May be suitable for use in other assays to be determined by the end user.)

**Predicted isoelectric point:** 8.5

**Predicted Molecular Mass:** 72.0kDa

**Accurate Molecular Mass:** 72kDa as determined by SDS-PAGE reducing conditions.

**[ USAGE ]**

Reconstitute in ddH<sub>2</sub>O to a concentration of 0-0.5 mg/mL. Do not vortex.

**[ STORAGE AND STABILITY ]**

**Storage:** Avoid repeated freeze/thaw cycles.

Store at 2-8°C for one month.

Aliquot and store at -80°C for 12 months.

**Stability Test:** The thermal stability is described by the loss rate. The loss rate was determined by accelerated thermal degradation test, that is, incubate the protein at 37°C for 48h, and no obvious degradation and precipitation were observed. The loss rate is less than 5% within the expiration date under appropriate storage condition.

**[ SEQUENCE ]**

DTN IKPILQVINI RPITGNSPP RYRLMSDGL  
NTLSSFMLAT QLNPLVEEEQ LSSNCVCQIH RFIVNTLKDG RRVILMELE  
VLKSAEAVGV KIGNPVPYNE GLGQPQVAPP APAASPAASS RPQPQNGSSG  
MGSTVSKAYG ASKTFGKAAG PLSHTSGGT QSKVVPIASL TPYQSKWTIC  
ARVTNKSQIR TWSNSRGEK LFSLELVDES GEIRATAFNE QVDFKFFPLIE  
VNKVVYFSKG TLKIANKQFT AVKNDYEMTF NNETSVMPCEDDHHLPTVQF  
DFTGIDDLEN KSKDSLVDII GICKSYEDAT KITVRSNNRE VAKRNIYLM  
TSGKVVATL WGEDADKFDG SRQPVLAIKG ARVSDFGGRS LSVLSSSTII  
ANP

**[ IDENTIFICATION ]**

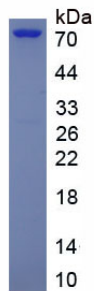


Figure. SDS-PAGE

**[ IMPORTANT NOTE ]**

The kit is designed for research use only, we will not be responsible for any issue if the kit was used in clinical diagnostic or any other procedures.