

**RPC046Mu01 500µg**

**Recombinant S100 Calcium Binding Protein A10 (S100A10)**

**Organism Species: *Mus musculus* (Mouse)**

***Instruction manual***

FOR RESEARCH USE ONLY

NOT FOR USE IN CLINICAL DIAGNOSTIC PROCEDURES

---

12th Edition (Revised in Aug, 2016)

**[ PROPERTIES ]**

**Source:** Prokaryotic expression

**Host:** *E.coli*

**Residues:** Pro2~Lys97

**Tags:** N-terminal His and GST Tag

**Subcellular Location:** Secreted

**Purity:** > 90%

**Traits:** Freeze-dried powder

**Buffer formulation:** 100mMNaHCO<sub>3</sub>, 500mMNaCl, pH8.3, containing 1mM DTT, 0.01% SKL, 5% Trehalose .

**Original Concentration:** 3000µg/mL

**Applications:** Positive Control; Immunogen; SDS-PAGE; WB.

(May be suitable for use in other assays to be determined by the end user.)

**Predicted isoelectric point:** 6.4

**Predicted Molecular Mass:** 41.1kDa

**Accurate Molecular Mass:** 41kDa as determined by SDS-PAGE reducing conditions.

**[ USAGE ]**

Reconstitute in ddH<sub>2</sub>O to a concentration of 0.1-1.0 mg/mL. Do not vortex.

**[ STORAGE AND STABILITY ]**

**Storage:** Avoid repeated freeze/thaw cycles.

Store at 2-8°C for one month.

Aliquot and store at -80°C for 12 months.

**Stability Test:** The thermal stability is described by the loss rate. The loss rate was determined by accelerated thermal degradation test, that is, incubate the protein at 37°C for 48h, and no obvious degradation and precipitation were observed. The loss rate is less than 5% within the expiration date under appropriate storage condition.

**[ SEQUENCE ]**

PSQMEHAME TMLTfHRFA GDKHLTKED LRVLMEREFp GFLENQKDPL  
 AVDKIMKDLd QCRDgKvGFQ SFLSLVAGLT IACNDYFVVN MKQKGKK

## [ IDENTIFICATION ]

G A T T C C A T T C C C A A T G G A G C C C A T G G A A C T A T G C T T A C G T T C C G C G T T G G E G G A A G A C C T T G C A A G A G A C T G A G C G C T A T G G A G G G G C T C C T G G G T T T T G A A T C A A A G A T C T C T G G C T G G A A A T A T G A G C T G S A C G C T C C G A T C C A A G C G C C T T C G A G C T T C T A T G A C T G T G C G G C G C T C C A T T G

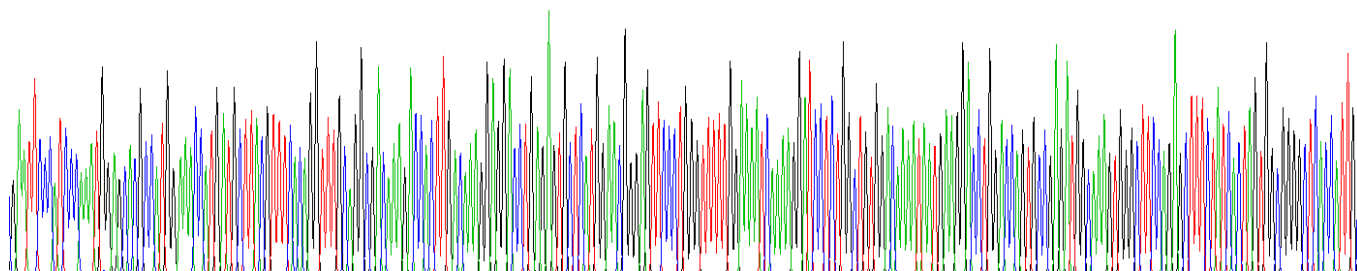
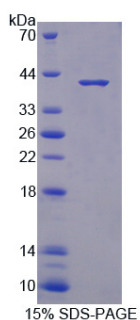


Figure . Gene Sequencing (extract)



## [ IMPORTANT NOTE ]

The kit is designed for research use only, we will not be responsible for any issue if the kit was used in clinical diagnostic or any other procedures.