

RPL920Hu01 10µg

Recombinant Semaphorin 3E (SEMA3E)

Organism Species: *Homo sapiens (Human)*

Instruction manual

FOR RESEARCH USE ONLY

NOT FOR USE IN CLINICAL DIAGNOSTIC PROCEDURES

13th Edition (Revised in Aug, 2023)

[PROPERTIES]

Source: Prokaryotic expression

Host: *E.coli*

Residues: Arg32~Phe516

Tags: N-terminal His Tag

Subcellular Location: Secreted

Purity: > 90%

Traits: Freeze-dried powder

Buffer formulation: 20mM Tris, 150mM NaCl, pH8.0, containing 0.01% Sarcosyl, 5%Trehalose.

Original Concentration: 200µg/mL

Applications: Positive Control; Immunogen; SDS-PAGE; WB.

(May be suitable for use in other assays to be determined by the end user.)

Predicted isoelectric point: 6.9

Predicted Molecular Mass: 59.1kDa

Accurate Molecular Mass: 59kDa as determined by SDS-PAGE reducing conditions.

[USAGE]

Reconstitute in 20mM Tris, 150mM NaCl (pH8.0) to a concentration of 0.1-1.0 mg/mL. Do not vortex.

[STORAGE AND STABILITY]

Storage: Avoid repeated freeze/thaw cycles.

Store at 2-8°C for one month.

Aliquot and store at -80°C for 12 months.

Stability Test: The thermal stability is described by the loss rate. The loss rate was determined by accelerated thermal degradation test, that is, incubate the protein at 37°C for 48h, and no obvious degradation and precipitation were observed. The loss rate is less than 5% within the expiration date under appropriate storage condition.

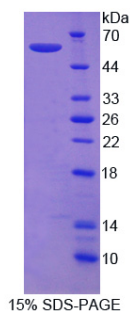
[SEQUENCE]

```

                                RLRLSHKEL LNLNRTSIFH
SPFGFLDLHT MLLDEYQERL FVGGRDLVYS LSLERISDGY KEIHWPTAL
KMEECIMKGK DAGECANYVR VLHHYNRTHL LTCGTGAFDP VCAFIRVGYH
LEDPLFHLES PRSERGRGRC PFDPSSSFIS TLIGSELFAG LYSDYWSRDA
AIFRSMGRLA HIRTEHDDER LLKEPKFVGS YMIPDNEDRD DNKVYFFTE
KALEAENNAH AIYTRVGRLC VNDVGGQRIL VNKWSTFLKA RLVCSVPGMN
GIDTYFDELE DVLLPTRDH KNPVIFGLFN TTSNIFRGHA ICVYHMSSIR
AAFNGPYAHK EGPEYHWSVY EGKVPYPRPG SCASKVNGGR YGTTKDYPDD
AIRFARSHPL MYQAIKPAHK KPILVKTDGK YNLKQIAVDR VEAEDGQYDV
LFIGTDNGIV LKVITIYNQE MESMEEVILE ELQIFKDPVP IISMEISSKR
QQLYIGSASA VAQVRF

```

[IDENTIFICATION]



[IMPORTANT NOTE]

The kit is designed for research use only, we will not be responsible for any issue if the kit was used in clinical diagnostic or any other procedures.