

RPF113Hu01 200µg
Recombinant Splicing Factor 3B Subunit 1 (SF3B1)
Organism Species: *Homo sapiens (Human)*
Instruction manual

FOR RESEARCH USE ONLY
NOT FOR USE IN CLINICAL DIAGNOSTIC PROCEDURES

13th Edition (Revised in Aug, 2023)

[PROPERTIES]

Source: Prokaryotic expression

Host: *E.coli*

Residues: Leu1038~Leu1304

Tags: N-terminal His Tag

Subcellular Location: Nucleus

Purity: > 80%

Traits: Freeze-dried powder

Buffer formulation: 20mM Tris, 150mM NaCl, pH8.0, containing 1mM EDTA, 1mM DTT, 0.01% SKL, 5% Trehalose and Proclin300.

Original Concentration: 200µg/mL

Applications: Positive Control; Immunogen; SDS-PAGE; WB.

(May be suitable for use in other assays to be determined by the end user.)

Predicted isoelectric point: 7.2

Predicted Molecular Mass: 34.1kDa

Accurate Molecular Mass: 33kDa as determined by SDS-PAGE reducing conditions.

[USAGE]

Reconstitute in ddH₂O to a concentration of 0.1-0.5 mg/mL. Do not vortex.

[STORAGE AND STABILITY]

Storage: Avoid repeated freeze/thaw cycles.

Store at 2-8°C for one month.

Aliquot and store at -80°C for 12 months.

Stability Test: The thermal stability is described by the loss rate. The loss rate was determined by accelerated thermal degradation test, that is, incubate the protein at 37°C for 48h, and no obvious degradation and precipitation were observed. The loss rate is less than 5% within the expiration date under appropriate storage condition.

[SEQUENCE]

LVG RIADRGAEYV
SAREWMRICF ELLELLKAHK KAIRRATVNT FG YIAKAIGP HDVLATLLNN
LKVQERQNRV CTTVAIAIVA ETCSPFTVLP ALMNEYRVPE LNVQNGVLKS
LSFLFEYIGE MGKDYYAVT PLLEDALMDR DLVHRQTASA VVQHMSLVGY
GFGCEDSLNH LLNYVWPVNF ETSPHVIQAV MGALEGLRVA IGPCRMLQYC
LQGLFHPARK VRDVYWKIYN SIYIGSQDAL IAHPRIYND DKNTYIRYEL
DYIL

[IDENTIFICATION]

G A T T C T G T T G G A T T C T G C G C G G C T G A T A T G A T C T C A G G G G G G T G G G T T C T T G G C T T T G G C T C T A A A C C C C A A A A G C A T T G G T G G C C C G C G T A A G C A T T G C T A A T T C A A G G C C A T T G C C C C T A G G G A T T G C C T A C C T T C G A C A C C C A A G T T C A G A A G C C G A C G G T T G A C C C T G T G C A A T T C

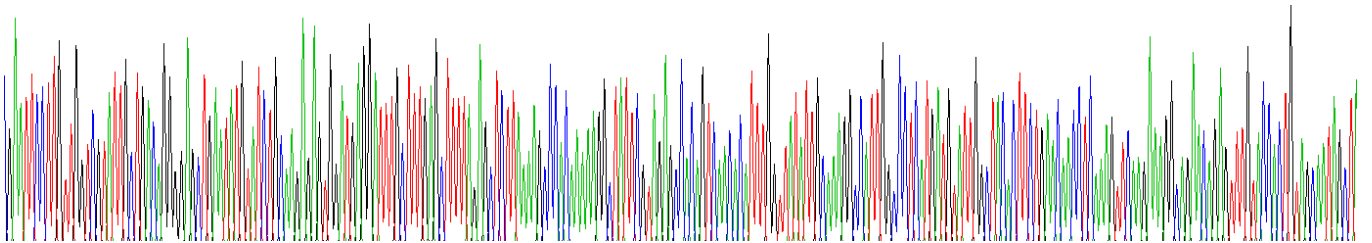


Figure . Gene Sequencing (extract)

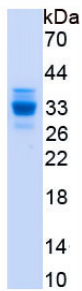


Figure. SDS-PAGE

[IMPORTANT NOTE]

The kit is designed for research use only, we will not be responsible for any issue if the kit was used in clinical diagnostic or any other procedures.