

RPB039Ra01 100µg

Recombinant Surfactant Associated Protein D (SPD)

Organism Species: *Rattus norvegicus* (Rat)

Instruction manual

FOR IN VITRO USE AND RESEARCH USE ONLY
NOT FOR USE IN CLINICAL DIAGNOSTIC PROCEDURES

12th Edition (Revised in Aug, 2016)

[PROPERTIES]

Source: Prokaryotic expression

Host: *E.coli*

Residues: Ala20~Phe374

Tags: N-terminal His Tag

Tissue Specificity: Lung

Subcellular Location: Secreted, Extracellular matrix

Purity: > 97%

Traits: Freeze-dried powder

Buffer formulation: PBS, pH7.4, containing 0.01% SKL, 1mM DTT, 5% Trehalose and Proclin300.

Original Concentration: 200µg/mL

Applications: Positive Control; Immunogen; SDS-PAGE; WB.

(May be suitable for use in other assays to be determined by the end user.)

Predicted isoelectric point: 7.1

Predicted Molecular Mass: 36.7kDa

Accurate Molecular Mass: 44/14kDa as determined by SDS-PAGE reducing conditions.

Phenomenon explanation:

The possible reasons that the actual band size differs from the predicted are as follows:

1. Splice variants: Alternative splicing may create different sized proteins from the same gene.
2. Relative charge: The composition of amino acids may affects the charge of the protein.
3. Post-translational modification: Phosphorylation, glycosylation, methylation etc.
4. Post-translation cleavage: Many proteins are synthesized as pro-proteins, and then cleaved to give the active form.
5. Polymerization of the target protein: Dimerization, multimerization etc.

[USAGE]

Reconstitute in 10mM PBS (pH7.4) to a concentration of 0.1-1.0 mg/mL. Do not vortex.

[STORAGE AND STABILITY]

Storage: Avoid repeated freeze/thaw cycles.

Store at 2-8°C for one month.

Aliquot and store at -80°C for 12 months.

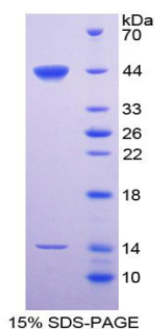
Stability Test: The thermal stability is described by the loss rate. The loss rate was determined by accelerated thermal degradation test, that is, incubate the protein at 37°C for 48h, and no obvious degradation and precipitation were observed. The loss rate is less than 5% within the expiration date under appropriate storage condition.

[SEQUENCE]

```

                A EMKTLNQRSI TNTCTLVLCN PTENGLPGRD
GRDGREGPRG  EKGDPGLPGP  MGLSGLPGPR  GPVGPKEGNG  SAGEPGPKGE
RGLVGPPGSP  GISGPAGKEG  PSGKQGNIGP  QGKPGPKGEA  GPKGEVGPAG
MQGSAGAKGP  AGPKGERGAP  GEQGAPGNAG  AAGPAGPAGP  QGAPGSRGPP
GLKGDRGAPG  DRGIKGESGL  PDSAALRQQM  EALNGKLQRL  EAAFSRYKKA
ALFPDQGSVG  DKIFRAANSE  EPFEDAKEMC  RQAGGQLASP  RSATENAAVQ
QLVTAHAKAA  FLSMTDVGTE  GKFTYPTGEA  LVYSNWAPGE  PNNNGGAENC
VEIFTNGQWN  DKACGEQRLV  ICEF
    
```

[IDENTIFICATION]



[IMPORTANT NOTE]

The kit is designed for in vitro and research use only, we will not be responsible for any issue if the kit was used in clinical diagnostic or any other procedures.