

**RPF793Hu01 50µg**

**Recombinant Taste Receptor Type 1 Member 3 (TAS1R3)**

**Organism Species: *Homo sapiens* (Human)**

***Instruction manual***

FOR RESEARCH USE ONLY

NOT FOR USE IN CLINICAL DIAGNOSTIC PROCEDURES

---

13th Edition (Revised in Aug, 2023)

**[ PROPERTIES ]**

**Source:** Prokaryotic expression

**Host:** *E.coli*

**Residues:** Ala21~Leu570

**Tags:** N-terminal His Tag

**Subcellular Location:** Membrane

**Purity:** > 95%

**Traits:** Freeze-dried powder

**Buffer formulation:** 20mM Tris, 150mM NaCl, pH8.0, containing 0.01% skl, 5%Trehalose.

**Original Concentration:** 200µg/mL

**Applications:** Positive Control; Immunogen; SDS-PAGE; WB.

(May be suitable for use in other assays to be determined by the end user.)

**Predicted isoelectric point:** 7.0

**Predicted Molecular Mass:** 64.7kDa

**Accurate Molecular Mass:** 65kDa as determined by SDS-PAGE reducing conditions.

**[ USAGE ]**

Reconstitute in 20mM Tris, 150mM NaCl (pH8.0) to a concentration of 0.1-1.0 mg/mL. Do not vortex.

**[ STORAGE AND STABILITY ]**

**Storage:** Avoid repeated freeze/thaw cycles.

Store at 2-8°C for one month.

Aliquot and store at -80°C for 12 months.

**Stability Test:** The thermal stability is described by the loss rate. The loss rate was determined by accelerated thermal degradation test, that is, incubate the protein at 37°C for 48h, and no obvious degradation and precipitation were observed. The loss rate is less than 5% within the expiration date under appropriate storage condition.

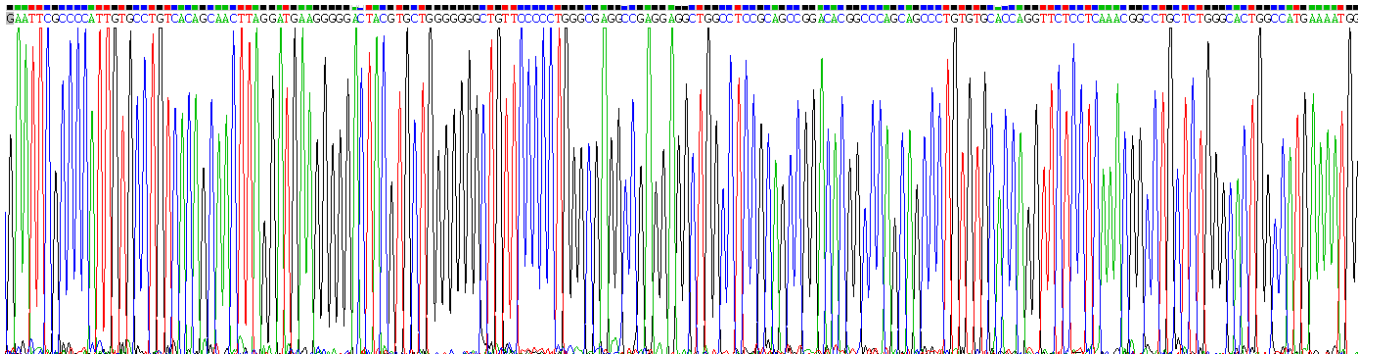
**[ SEQUENCE ]**

```

APLCLSQQLR MKGDYVLGGL FPLGEAEEAG
LRSRTRPSSP VCTRFSSNGL LWALAMKMAV EEINNKSDLL PGLRLGYDLF
DTCSEPVVAM KP SLMFLAKA GSRDIAAYCN YTQYQPRVLA VIGPHSSELA
MVTGKFFSFF LMPQVSYGAS MELL SARETF PSFFRTVPSD RVQLTAAAE L
LQEF GWNWVA ALGSDDEYGR QGLSIFSALA AARGICIAHE GLVPLPRADD
SRLGKVQDVL HQVNQSSVQV VLLFASVHAA HALFNYSISS RLSPKVWVAS
EAWLTSDLVM GLPGMAQMG T VLGFLQRGAQ LHEFPQYVKT HLALATDPAF
CSALGEREQG LEEDVVGQRC PQDCITLQN VSAGLNHHQT FSVYAAVYSV
AQUALHNTLQC NASGCPAQDP VKPWQLLENM YNLTFHVGGL PLRFDSSGNV
DMEYDLKLWV WQGSVPRLHD VGRFNGSLRT ERLKIRWHTS DNQKPVSRCS
RQCQEQQVRR VKGFHSCCYD CVDCEAGSYR QNPDDIAC TF CGQDEWSPER
STRCFRRRSR FLAWGEPAVL

```

**[ IDENTIFICATION ]**



**Figure . Gene Sequencing (extract)**

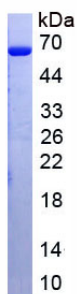


Figure. SDS-PAGE

**[ IMPORTANT NOTE ]**

The kit is designed for research use only, we will not be responsible for any issue if the kit was used in clinical diagnostic or any other procedures.