

**RPG319Ra01 100µg**

**Recombinant Testisin (TEST1)**

**Organism Species: *Rattus norvegicus* (Rat)**

***Instruction manual***

FOR RESEARCH USE ONLY

NOT FOR USE IN CLINICAL DIAGNOSTIC PROCEDURES

---

13th Edition (Revised in Aug, 2023)

## [ **PROPERTIES** ]

**Source:** Prokaryotic expression

**Host:** *E.coli*

**Residues:** His51~Ala328

**Tags:** N-terminal His Tag

**Subcellular Location:** Extracellular matrix

**Purity:** > 90%

**Traits:** Freeze-dried powder

**Buffer formulation:** PBS, pH7.4, containing 0.01% SKL, 5% Trehalose

**Original Concentration:** 200µg/mL

**Applications:** Positive Control; Immunogen; SDS-PAGE; WB.

(May be suitable for use in other assays to be determined by the end user.)

**Predicted isoelectric point:** 7.3

**Predicted Molecular Mass:** 35.1kDa

**Accurate Molecular Mass:** 35kDa as determined by SDS-PAGE reducing conditions.

## [ **USAGE** ]

Reconstitute in 10mM PBS (pH7.4) to a concentration of 0.1-1.0 mg/mL. Do not vortex

## [ **STORAGE AND STABILITY** ]

**Storage:** Avoid repeated freeze/thaw cycles.

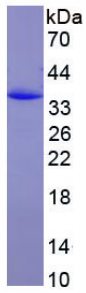
Store at 2-8°C for one month.

Aliquot and store at -80°C for 12 months.

**Stability Test:** The thermal stability is described by the loss rate. The loss rate was determined by accelerated thermal degradation test, that is, incubate the protein at 37°C for 48h, and no obvious degradation and precipitation were observed. The loss rate is less than 5% within the expiration date under appropriate storage condition.

## [ **SEQUENCE** ]

HRTIPSRIVG GEEAELGRWP WQGSRLRWGN HLCGATLLNR RWVLTAAHCF QKDNDPFDWT VQFGELTSRP SLWNLQAYSN RYQIEDIFLS PKYTEQFFHD IALLKLSSPV  
TYSNFIQPIC LLNSTYKFAN RTDCWVTGWG AIGEDBSLPL PNNLQEVQVA IINNTMCNHL FKKPDRINI WGMVCAGSP EGGKDACFGD SGGPLVCNQD TWVYQVGVVS  
WGIGCCRPNR PGVYTNISHH YNWIRLTMIR NGMLRFPDAP LLLFLTLAWA SSSLLRPA

**[ IDENTIFICATION ]****[ IMPORTANT NOTE ]**

The kit is designed for research use only, we will not be responsible for any issue if the kit was used in clinical diagnostic or any other procedures.