

**RPP574Hu01 1**

**Recombinant Translocase Of Outer Mitochondrial Membrane 70A (TOMM70A)**

**Organism Species: *Homo sapiens (Human)***

***Instruction manual***

FOR RESEARCH USE ONLY

NOT FOR USE IN CLINICAL DIAGNOSTIC PROCEDURES

---

12th Edition (Revised in Aug, 2016)

**[ PROPERTIES ]**

**Source:** Prokaryotic expression

**Host:** *E.coli*

**Residues:** Leu333~Leu608

**Tags:** N-terminal His Tag

**Subcellular Location:** Secreted

**Purity:** > 95%

**Traits:** Freeze-dried powder

**Buffer formulation:** 20mM Tris, 150mM NaCl, pH8.0, containing 1mM EDTA, 1mM DTT, 0.01% SKL, 5% Trehalose and Proclin300.

**Original Concentration:** 200µg/mL

**Applications:** Positive Control; Immunogen; SDS-PAGE; WB.

(May be suitable for use in other assays to be determined by the end user.)

**Predicted isoelectric point:** 5.5

**Predicted Molecular Mass:** 34.8kDa

**Accurate Molecular Mass:** 35kDa as determined by SDS-PAGE reducing conditions.

**[ USAGE ]**

Reconstitute in 20mM Tris, 150mM NaCl (pH8.0) to a concentration of 0.1-1.0 mg/mL. Do not vortex.

**[ STORAGE AND STABILITY ]**

**Storage:** Avoid repeated freeze/thaw cycles.

Store at 2-8°C for one month.

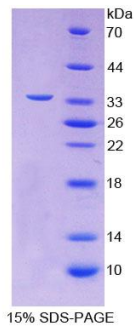
Aliquot and store at -80°C for 12 months.

**Stability Test:** The thermal stability is described by the loss rate. The loss rate was determined by accelerated thermal degradation test, that is, incubate the protein at 37°C for 48h, and no obvious degradation and precipitation were observed. The loss rate is less than 5% within the expiration date under appropriate storage condition.

**[ SEQUENCE ]**

LLRATFYL LIGNANAACP  
DLDKVISLKE ANVKLRANAL IKRGSMYMQQ QQPLLSTQDF NMAADIDPQN  
ADVYHHRGQL KILLDQVEEA VADFDECIRL RPESALAAQ KCFALYRQAY  
TGNSSQIQAMKGFEEVIK KFPRCAEGYA LYAQUALDQQ QFGKADEMYD  
KCIDLEPDNA TTYVHKGLLQ LQWKQDLDRG LELISKAIEI DNKCDFAYET  
MGTIEVQRGN MEKAIDMFNK AINLAKSEME MAHLYSLCDA AHAQTEVAKK  
YGLKPPTL

**[ IDENTIFICATION ]**



**[ IMPORTANT NOTE ]**

The kit is designed for research use only, we will not be responsible for any issue if the kit was used in clinical diagnostic or any other procedures.