

**RPC795Mu02 10µg**

**Recombinant Transmembrane Protease, Serine 2 (TMPRSS2)**

**Organism Species: *Mus musculus* (Mouse)**

***Instruction manual***

**FOR RESEARCH USE ONLY**

**NOT FOR USE IN CLINICAL DIAGNOSTIC PROCEDURES**

---

13th Edition (Revised in Aug, 2023)

## [ **PROPERTIES** ]

**Source:** Prokaryotic expression

**Host:** *E.coli*

**Residues:** Trp105~Ser490

**Tags:** N-terminal His Tag

**Subcellular Location:** Membrane, Secreted

**Purity:** > 95%

**Traits:** Freeze-dried powder

**Buffer formulation:** PBS, pH7.4, containing 0.01% SKL, 5% Trehalose.

**Original Concentration:** 50µg/mL

**Applications:** Positive Control; Immunogen; SDS-PAGE; WB.

(May be suitable for use in other assays to be determined by the end user.)

**Predicted isoelectric point:** 7.0

**Predicted Molecular Mass:** 45.7kDa

**Accurate Molecular Mass:** 46kDa as determined by SDS-PAGE reducing conditions.

## [ **USAGE** ]

Reconstitute in ddH<sub>2</sub>O to a concentration of 0.1-0.5 mg/mL. Do not vortex.

## [ **STORAGE AND STABILITY** ]

**Storage:** Avoid repeated freeze/thaw cycles.

Store at 2-8°C for one month.

Aliquot and store at -80°C for 12 months.

**Stability Test:** The thermal stability is described by the loss rate. The loss rate was determined by accelerated thermal degradation test, that is, incubate the protein at 37°C for 48h, and no obvious degradation and precipitation were observed. The loss rate is less than 5% within the expiration date under appropriate storage condition.

## [ **SEQUENCE** ]

WRFWDS NCSTSEMECG SSGTCISSSL WCDGVAHCPN GEDENRCVRL  
 YGQSFILQVY SSQRKAWYPV CQDDWSESYG RAACKDMGYK NNFYSSQGIP  
 DQSGATSFMK LNVSSGNVDL YKKLYHSDSC SSRMVVSLRC IECGVRSVKR  
 QSRIVGGLNA SPGDWPWQVS LHVQGVHVCG GSIITPEWIV TAAHCVEEPL  
 SSPRYWTAF A GILRQSLMFY GSRHQVEKVI SHPNYDSKTK NNDIALMKLQ  
 TPLAFNDLVK PVCLPNPGMM LDLDQECWIS GWGATYEKGK TSDVLNAAMV  
 PLIEPSKCN S KYIYNNLITP AMICAGFLQG SVDSCQGDSG GPLVTLKNGI  
 WWLIGDTSWG SGCALALRPG VYGNVTVFTD WIYQQMRANS

## [ IDENTIFICATION ]

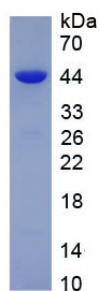


Figure. SDS-PAGE

## [ IMPORTANT NOTE ]

The kit is designed for research use only, we will not be responsible for any issue if the kit was used in clinical diagnostic or any other procedures.