

RPF800Hu01 200µg

Recombinant Transmembrane Protease, Serine 4 (TMPRSS4)

Organism Species: *Homo sapiens (Human)*

Instruction manual

FOR RESEARCH USE ONLY

NOT FOR USE IN CLINICAL DIAGNOSTIC PROCEDURES

13th Edition (Revised in Aug, 2023)

[**PROPERTIES**]

Source: Prokaryotic expression

Host: *E.coli*

Residues: Lys54~Leu437

Tags: N-terminal His Tag

Subcellular Location: Membrane

Purity: > 90%

Traits: Freeze-dried powder

Buffer formulation: PBS, pH7.4, containing 0.01% SKL, 5% Trehalose.

Original Concentration: 250µg/mL

Applications: Positive Control; Immunogen; SDS-PAGE; WB.

(May be suitable for use in other assays to be determined by the end user.)

Predicted isoelectric point: 5.1

Predicted Molecular Mass: 46.1kDa

Accurate Molecular Mass: 46kDa as determined by SDS-PAGE reducing conditions.

[**USAGE**]

Reconstitute in 10mM PBS (pH7.4) to a concentration of 0.1-1.0 mg/mL. Do not vortex.

[**STORAGE AND STABILITY**]

Storage: Avoid repeated freeze/thaw cycles.

Store at 2-8°C for one month.

Aliquot and store at -80°C for 12 months.

Stability Test: The thermal stability is described by the loss rate. The loss rate was determined by accelerated thermal degradation test, that is, incubate the protein at 37°C for 48h, and no obvious degradation and precipitation were observed. The loss rate is less than 5% within the expiration date under appropriate storage condition.

[**SEQUENCE**]

KVILDKY YFLCGQPLHF IPRKQLCDGE LDCPLGEDEE HCVKSFPEGP
 AVAVRLSKDR STLQVLDSAT GNWFSACFDN FTEALAETAC RQMGYSSKPT
 FRAVEIGPDQ DLDVVEITEN SQELMRNNS GPCLSGSLVS LHCLACGKSL
 KTPRVVGVEE ASVDSWPWQV SIQYDKQHVC GGSILDPHWV LTAAHCFRKH
 TDFVNWKVRA GSDKLGSFPS LAVAKIIIE FNPMPKDND IALMKLQFPL
 TFSGTVRPIC LPFFDEELTP ATPLWIIGWG FTKQNGGKMS DILLQASVQV
 IDSTRCNADD AYQGEVTEKM MCAGIPEGGV DTCQGDSSGP LMYQSDQWHV
 VGIVSWG YGC GGPSTPGVYT KVSAYLNWIY NVWKAEL

[IDENTIFICATION]

GGATCCAAAGGTGATTCTGGATAAATACTCTCCTCTGCGGGCAGCCTCTCCACTTCATCCCGAGGAAGCAAGCTGTGTGACGGAGAGCTGGACTGTCCCTTGGGGGAGGACGAGGAGCACTGTGTCAAGAGCTTCCCCGAAGGGCCTGCAGTGGCAGTC

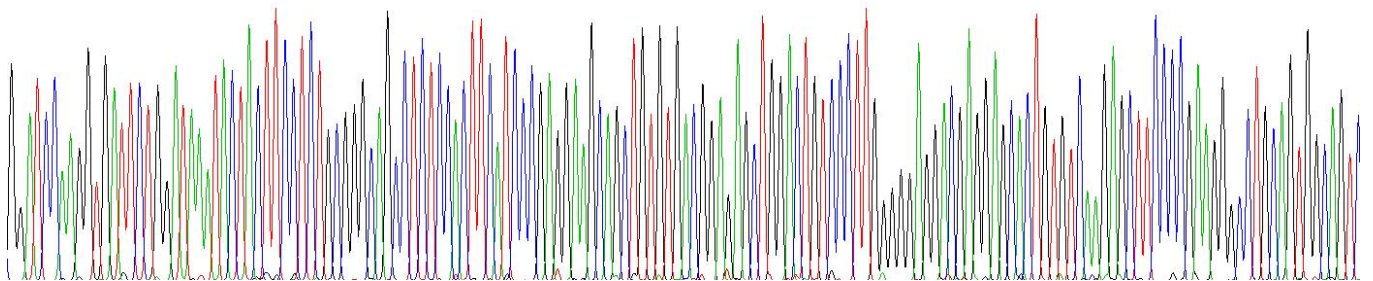
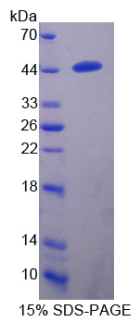


Figure . Gene Sequencing (extract)



[IMPORTANT NOTE]

The kit is designed for research use only, we will not be responsible for any issue if the kit was used in clinical diagnostic or any other procedures.