

RPE871Hu01 100µg
Recombinant Tripeptidyl Peptidase II (TPP2)
Organism Species: *Homo sapiens* (Human)
Instruction manual

FOR RESEARCH USE ONLY
NOT FOR USE IN CLINICAL DIAGNOSTIC PROCEDURES

12th Edition (Revised in Aug, 2016)

[PROPERTIES]

Source: Prokaryotic expression

Host: *E.coli*

Residues: Ile40~Asp509

Tags: N-terminal His Tag

Subcellular Location: Nucleus, Cytoplasm

Purity: > 95%

Traits: Freeze-dried powder

Buffer formulation: 20mM Tris, 150mM NaCl, pH8.0, containing 0.01% SKL, 5% Trehalose.

Original Concentration: 200µg/mL

Applications: Positive Control; Immunogen; SDS-PAGE; WB.

(May be suitable for use in other assays to be determined by the end user.)

Predicted isoelectric point: 5.3

Predicted Molecular Mass: 54.1kDa

Accurate Molecular Mass: 54kDa as determined by SDS-PAGE reducing conditions.

[USAGE]

Reconstitute in 20mM Tris, 150mM NaCl (pH8.0) to a concentration of 0.1-1.0 mg/mL. Do not vortex.

[STORAGE AND STABILITY]

Storage: Avoid repeated freeze/thaw cycles.

Store at 2-8°C for one month.

Aliquot and store at -80°C for 12 months.

Stability Test: The thermal stability is described by the loss rate. The loss rate was determined by accelerated thermal degradation test, that is, incubate the protein at 37°C for 48h, and no obvious degradation and precipitation were observed. The loss rate is less than 5% within the expiration date under appropriate storage condition.

[SEQUENCE]

I AVLDTGVDPG
 APMQVTTDG KPKIVDIIDT TGSGDVNTAT EVEPKDGEIV GLSGRVLKIP
 ASWTNPSGKY HIGIKNGYDF YPKALKERIQ KERKEKIWDP VHRVALAEAC
 RKQEEFDVAN NGSSQANKLI KEELQSQVEL LNSFEKKYSD PGPVYDCLVW
 HDGEVWRACI DSNEDGDLSK STVLRNYKEA QEYGSFGTAE MLNYSVNIYD
 DGNLLSIVTS GGAHGTHVAS IAAGHFPEEP ERNGVAPGAQ ILSIKIGDTR
 LSTMETGTGL IRAMIEVINH KCDLVNYSYG EATHWPNSGR ICEVINEAVW
 KHNIIVSSA GNNGPCLSTV GCPGGTTSSV IGVGAYVSPD MMVAEYSLRE
 KLPANQYTS SRGPSADGAL GVSISAPGGA IASVPNWTLR GTQLMNGTSM
 SSPNACGGIA LILSGLKANN IDYTVHSVRR ALENTAVKAD NIEVFAQGHG
 IIQVDKAYD

[IDENTIFICATION]

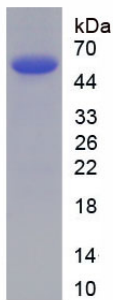


Figure. SDS-PAGE

[IMPORTANT NOTE]

The kit is designed for research use only, we will not be responsible for any issue if the kit was used in clinical diagnostic or any other procedures.