

**RPD232Hu03 10µg**

**Recombinant Troponin T Type 2, Cardiac (TNNT2)**

**Organism Species: *Homo sapiens* (Human)**

***Instruction manual***

FOR RESEARCH USE ONLY

NOT FOR USE IN CLINICAL DIAGNOSTIC PROCEDURES

---

12th Edition (Revised in Aug, 2016)

## [ **PROPERTIES** ]

**Source:** Prokaryotic expression

**Host:** *E.coli*

**Residues:** Met1~Lys295

**Tags:** N-terminal His and GST Tag

**Subcellular Location:** Secreted

**Purity:** > 95%

**Traits:** Freeze-dried powder

**Buffer formulation:** 20mM Tris, 150mM NaCl, pH8.0, containing 1mM EDTA, 0.01% SKL, 5% Trehalose .

**Original Concentration:** 200µg/mL

**Applications:** Positive Control; Immunogen; SDS-PAGE; WB.

(May be suitable for use in other assays to be determined by the end user.)

**Predicted isoelectric point:** 4.6

**Predicted Molecular Mass:** 65.6kDa

**Accurate Molecular Mass:** 70kDa as determined by SDS-PAGE reducing conditions.

### **Phenomenon explanation:**

The possible reasons that the actual band size differs from the predicted are as follows:

1. Splice variants: Alternative splicing may create different sized proteins from the same gene.
2. Relative charge: The composition of amino acids may affects the charge of the protein.
3. Post-translational modification: Phosphorylation, glycosylation, methylation etc.
4. Post-translation cleavage: Many proteins are synthesized as pro-proteins, and then cleaved to give the active form.
5. Polymerization of the target protein: Dimerization, multimerization etc.

## [ **USAGE** ]

Reconstitute in 20mM Tris, 150mM NaCl (pH8.0) to a concentration of 0.1-1.0 mg/mL. Do not vortex.

**[ STORAGE AND STABILITY ]**

**Storage:** Avoid repeated freeze/thaw cycles.

Store at 2-8°C for one month.

Aliquot and store at -80°C for 12 months.

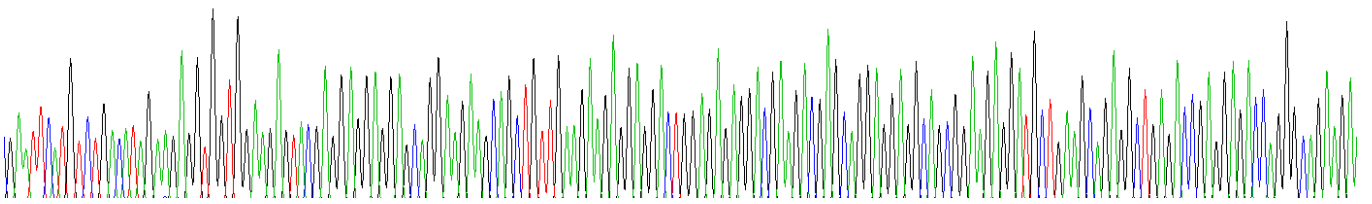
**Stability Test:** The thermal stability is described by the loss rate. The loss rate was determined by accelerated thermal degradation test, that is, incubate the protein at 37°C for 48h, and no obvious degradation and precipitation were observed. The loss rate is less than 5% within the expiration date under appropriate storage condition.

**[ SEQUENCE ]**

```
MSDIEEVVEE YEEEEQEEAA VEEEDWRED EDEQEEAAEE DAEAEAETEE
TRAEDEEEEE EAKEAEDGPM EESKPKPRSF MPNLVPPKIP DGERVDFDDI
HRKRMEKDLN ELQALIEAHF ENRKKEEEL VSLKDRIERR RAERAEQQRI
RNEREKERQN RLAEEERARRE EEENRRKAED EARKKKALSN MMHFGGYIQK
TERKSGKRQT EREKKKILA ERRKVLAIDH LNEQLREKA KELWQSIYNL
EAEKFDLQEK FKQQKYEINV LRNRINDNQK VSKTRGKAKV TGRWK
```

**[ IDENTIFICATION ]**

G A A T T C A T G T C T G A C A T A G A A G A G G T G G T G G A A G A G T A C G A G G A G G A G G A G C A G G A A G A A G C A G C T T G A A G A A G A G G A G G A C T G G A G A G A G G A C G A A G A C G A G C A G G A G G A G G C A G C G G A A G A G G A T G C T G A A G C A G A G G C T G A G A C C G A G G A C C A G G C A G A G A I



**Figure . Gene Sequencing (extract)**

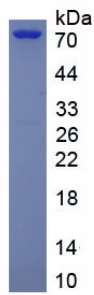


Figure. SDS-PAGE

**[ IMPORTANT NOTE ]**

The kit is designed for research use only, we will not be responsible for any issue if the kit was used in clinical diagnostic or any other procedures.