

**RPA145Hu01 50µg**

**Recombinant Vascular Endothelial Growth Factor C (VEGFC)**

**Organism Species: *Homo sapiens (Human)***

***Instruction manual***

FOR RESEARCH USE ONLY

NOT FOR USE IN CLINICAL DIAGNOSTIC PROCEDURES

---

13th Edition (Revised in Aug, 2023)

**[ PROPERTIES ]**

**Source:** Prokaryotic expression

**Host:** *E.coli*

**Residues:** Glu47~Trp413

**Tags:** N-terminal His Tag

**Subcellular Location:** Secreted

**Purity:** > 90%

**Traits:** Freeze-dried powder

**Buffer formulation:** 20mM Tris, 150mM NaCl, pH8.0, containing 0.01% skl, 5%Trehalose.

**Original Concentration:** 100µg/mL

**Applications:** Positive Control; Immunogen; SDS-PAGE; WB.

(May be suitable for use in other assays to be determined by the end user.)

**Predicted isoelectric point:** 8.2

**Predicted Molecular Mass:** 45.5kDa

**Accurate Molecular Mass:** 45kDa as determined by SDS-PAGE reducing conditions.

**[ USAGE ]**

Reconstitute in ddH<sub>2</sub>O to a concentration of 0.1-1.0 mg/mL. Do not vortex.

**[ STORAGE AND STABILITY ]**

**Storage:** Avoid repeated freeze/thaw cycles.

Store at 2-8°C for one month.

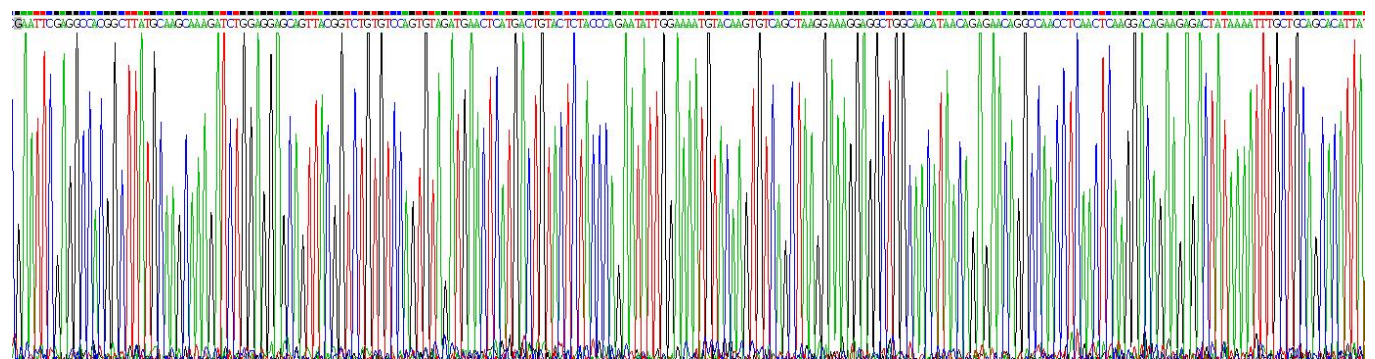
Aliquot and store at -80°C for 12 months.

**Stability Test:** The thermal stability is described by the loss rate. The loss rate was determined by accelerated thermal degradation test, that is, incubate the protein at 37°C for 48h, and no obvious degradation and precipitation were observed. The loss rate is less than 5% within the expiration date under appropriate storage condition.

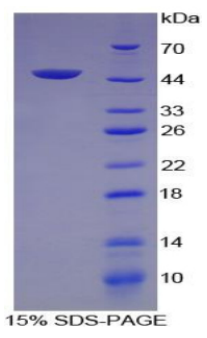
**[ SEQUENCE ]**

EATA  
 YASKDLEEQL RSVSSVDELM TVLYPEYWKM YKCQLRKGGW QHNREQANLN  
 SRTEETIKFA AAHYNTEILK SIDNEWRTQ CMPREVCIDV GKEFGVATNT  
 FFKPPCVSVY RCGGCCNSEG LQCMNTSTSY LSKTLFEITV PLSQGPKPVT  
 ISFANHTSCR CMSKLDVYRQ VHSIIRRS LP ATLPQCQAAN KTCPTNYMWN  
 NHICRCLAQE DFMFSSDAGD DSTDGFHDIC GPNKELDEET CQCVCRAGLR  
 PASCOPHKEL DRNSCQCVCK NKLFPSCGA NREFDENTCQ CVCKRTCPRN  
 QPLNPGKCAC ECTESPQKCL LKGKKFHHQT CSCYRRPCTN RQKACEPGFS  
 YSEEVCRCPV SYW

**[ IDENTIFICATION ]**



**Figure . Gene Sequencing (extract)**



**[ IMPORTANT NOTE ]**

The kit is designed for research use only, we will not be responsible for any issue if the kit was used in clinical diagnostic or any other procedures.