

**RPB810Mu03 10 $\mu$ g**  
**Recombinant Vitamin D Binding Protein (DBP)**  
**Organism Species: Mus musculus (Mouse)**  
***Instruction manual***

FOR IN VITRO USE AND RESEARCH USE ONLY  
NOT FOR USE IN CLINICAL DIAGNOSTIC PROCEDURES

---

12th Edition (Revised in Aug, 2016)

**[ PROPERTIES ]**

**Source:** Prokaryotic expression

**Host:** *E.coli*

**Residuess:** Leu17~Ser476

**Tags:** N-terminal His and GST Tag

**Tissue Specificity:** Secreted

**Purity:**

**Traits:** Freeze-dried powder

**Buffer formulation:** 20mM Tris, 150mM NaCl, pH8.0, containing 1mM EDTA, 1mM DTT, 0.01% SKL, 5% Trehalose and Proclin300.

**Original Concentration:** 200µg/mL

**Applications:** Positive Control; Immunogen; SDS-PAGE; WB.

(May be suitable for use in other assays to be determined by the end user.)

**Predicted isoelectric point:** 5.7

**Predicted Molecular Mass:** 81.9kDa

**Accurate Molecular Mass:** 82kDa as determined by SDS-PAGE reducing conditions.

**[ USAGE ]**

Reconstitute in 20mM Tris, 150mM NaCl (pH8.0) to a concentration of 0.1-1.0 mg/mL. Do not vortex.

**[ STORAGE AND STABILITY ]**

**Storage:** Avoid repeated freeze/thaw cycles.

Store at 2-8°C for one month.

Aliquot and store at -80°C for 12 months.

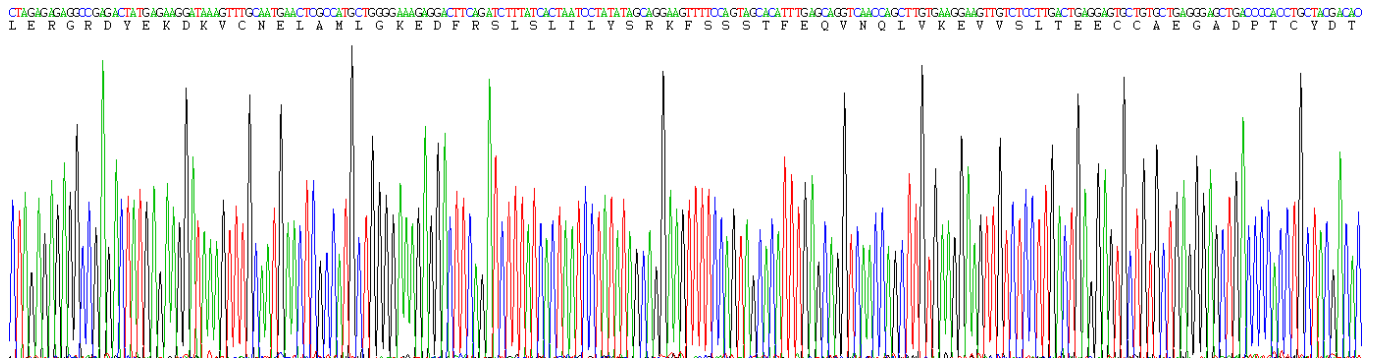
**Stability Test:** The thermal stability is described by the loss rate. The loss rate was determined by accelerated thermal degradation test, that is, incubate the protein at 37°C for 48h, and no obvious degradation and precipitation were observed. The loss rate is less than 5% within the expiration date under appropriate storage condition.

**[ SEQUENCE ]**

```

                LERG RDYEKDKVCN ELAMLGKEDF RSLSLILYSR
KFSSTFEQV  NQLVKEVVS L TEECCAEGAD PTCYDTRTSE LSVKSCESDA
PPFVHPGTPE CCTKEGLERK LCMAALSHQP QEFPTYVEPT NDEICEAFRR
DPKGFADQFL YEYSSNYGQA PLPLLVAYTK NYLSMVGSCC TSANPTVCFV
KERLQMKHLS LLTTMSNRVC SQYAAYGKEK SRLSHLIKLA QKVPTANLEN
VLPLAEDFTE ILSRCESTS EDCMASELPE HTIKICQNLS KKNSKFEECC
QENTPMNIFM CTYFMPAAEP LQLPAIKLPT GKDLCGQSTT QAMDQYTFEL
SRRTQVPEVF LSKVLEPTLK TLRECCDTQD SVACFSTQSP LLKRQLTSFI
EKQEMCADY SENTFTEYKK KLAERLRKT PNTSPAELKD MVEKHSDFAS
KCCSINSPPL YCSSQIDAEM IDTLQS
    
```

**[ IDENTIFICATION ]**



**Figure. Gene Sequencing (Extract)**

