

RPP549Hu01 10µg

Recombinant Wingless Type MMTV Integration Site Family, Member 5A (WNT5A)

Organism Species: *Homo sapiens (Human)*

Instruction manual

FOR RESEARCH USE ONLY

NOT FOR USE IN CLINICAL DIAGNOSTIC PROCEDURES

13th Edition (Revised in Aug, 2023)

[PROPERTIES]

Source: Prokaryotic expression

Host: *E.coli*

Residues: Ile62~Lys380

Tags: N-terminal His Tag

Subcellular Location: Secreted, Extracellular matrix

Purity: > 90%

Traits: Freeze-dried powder

Buffer formulation: PBS, pH7.4, containing 0.01% SKL, 5% Trehalose .

Original Concentration: 70µg/mL

Applications: Positive Control; Immunogen; SDS-PAGE; WB.

(May be suitable for use in other assays to be determined by the end user.)

Predicted isoelectric point: 8.4

Predicted Molecular Mass: 39.5kDa

Accurate Molecular Mass: 40kDa as determined by SDS-PAGE reducing conditions.

[USAGE]

Reconstitute in ddH₂O to a concentration of 0.1-0.5 mg/mL. Do not vortex.

[STORAGE AND STABILITY]

Storage: Avoid repeated freeze/thaw cycles.

Store at 2-8°C for one month.

Aliquot and store at -80°C for 12 months.

Stability Test: The thermal stability is described by the loss rate. The loss rate was determined by accelerated thermal degradation test, that is, incubate the protein at 37°C for 48h, and no obvious degradation and precipitation were observed. The loss rate is less than 5% within the expiration date under appropriate storage condition.

[SEQUENCE]

I I G A Q P L C S Q L A G L S Q G Q K K L C H L Y Q D H M Q Y I G E G A K T G I K E C Q Y Q F R H R R W N C S T V D N T S V F G R V M Q
 I G S R E T A F T Y A V S A A G V V N A M S R A C R E G E L S T C G C S R A A R P K D L P R D W L W G G C G D N I D Y G Y R F A K E F V
 D A R E R E R I H A K G S Y E S A R I L M N L H N E A G R R T V Y N L A D V A C K C H G V S G S C S L K T C W L Q L A D F R K V G D A
 L K E K Y D S A A M R L N S R G K L V Q V N S R F N S P T T Q D L V Y I D P S P D Y C V R N E S T G S L G T Q G R L C N K T S E G M D
 G C E L M C C G R G Y D Q F K T V Q T E R C H C K F H W C C Y V K C K K C T E I V D Q F V C K

[IDENTIFICATION]

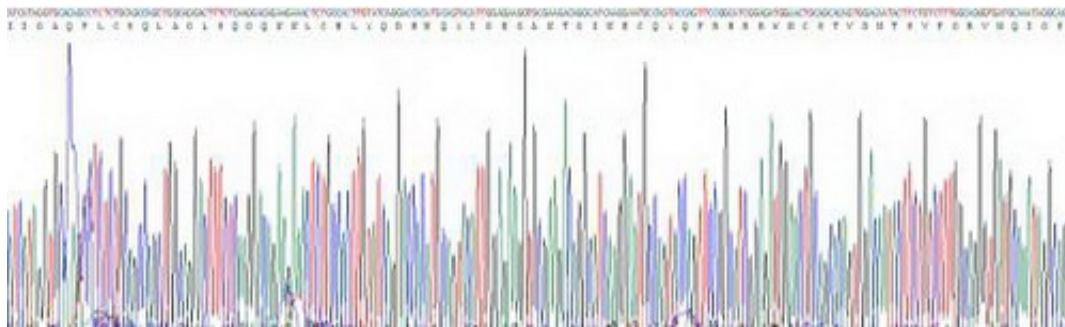


Figure . Gene Sequencing (extract)

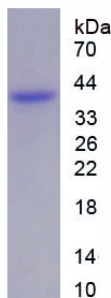


Figure. SDS-PAGE

[IMPORTANT NOTE]

The kit is designed for research use only, we will not be responsible for any issue if the kit was used in clinical diagnostic or any other procedures.